

**EUROFLO**<sup>TM</sup>  
*where innovation flows*

**ES, ED series**

*Stainless Steel Centrifugal  
Pumps*



ES/ED series is a single stage Back Pull-Out ( BPO ) Stainless Steel Centrifugal pumps. They are ideal where space is a premium and a need for ease of alignments between pump and motor. Main dimensions and performance according to EN733/DIN24255 standard. It is available in two versions, SUS 304 and SUS 316L and are suitable for transferring moderately aggressive fluid.

## Applications

- Swimming Pool
- Irrigation and Horticulture
- Agriculture
- Water Supply & Boosting System
- Portal Water Booster set
- Small RO System
- Plumbing and Sanitary

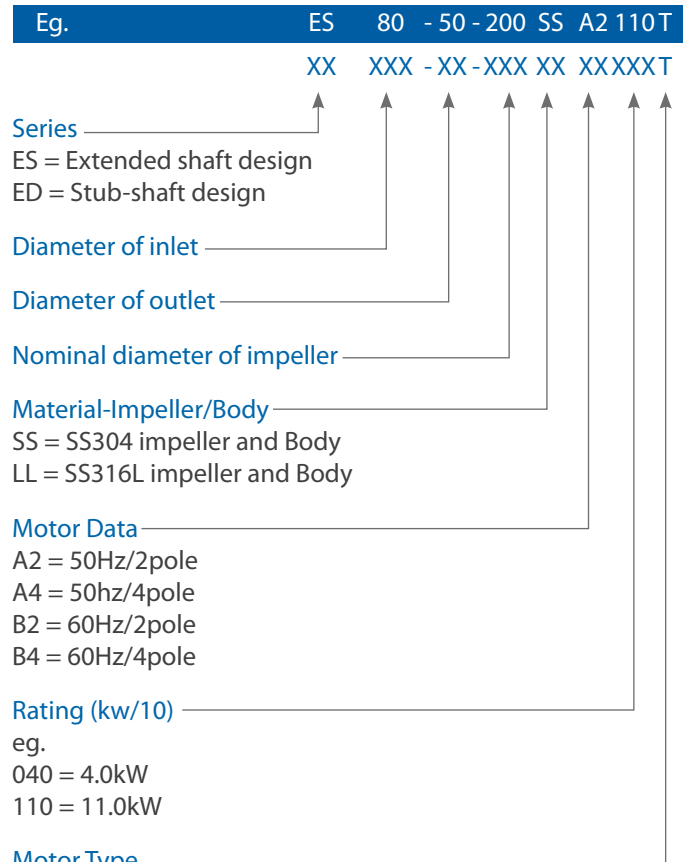
## Specifications

- Maximum working pressure: 10 bar
- Fluid temperature:
  - With NBR/ceramic/carbon: -20°C~+80°C
  - With Viton/ceramic/carbon: -20°C~+110°C
  - With EPR/ceramic/carbon: -20°C~+110°C

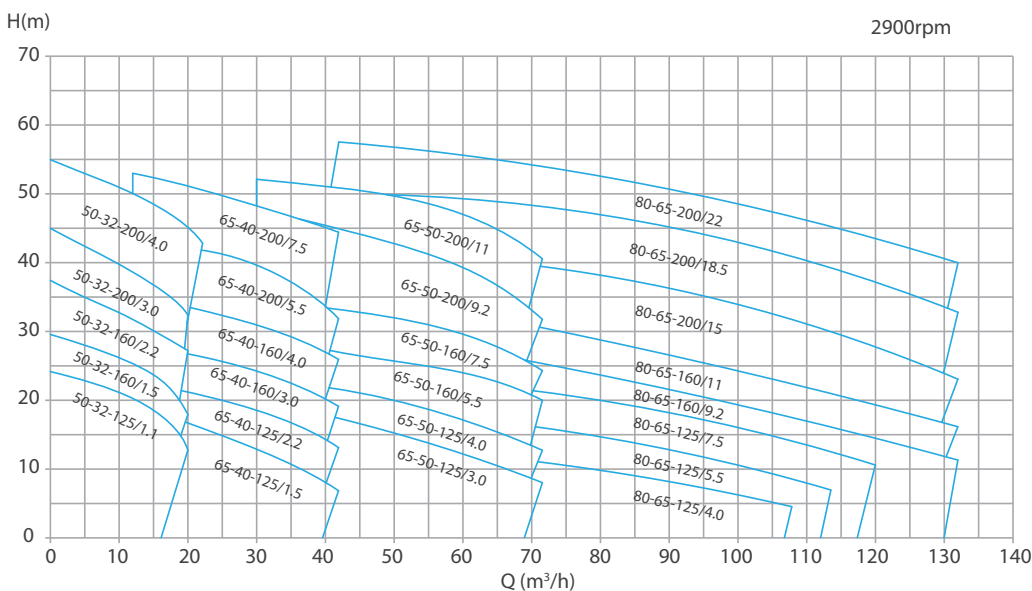
## Motor General Details

- Synchronise 2 and 4 poles motor
- Insulation class F
- Protection degree IP55
- 1ph~230 ± 10%
- 3ph~230/400V ± 10% 50Hz up to 4kW included, 400/690V ± 10% above

## Coding System



## ES, ED series - Family Curve



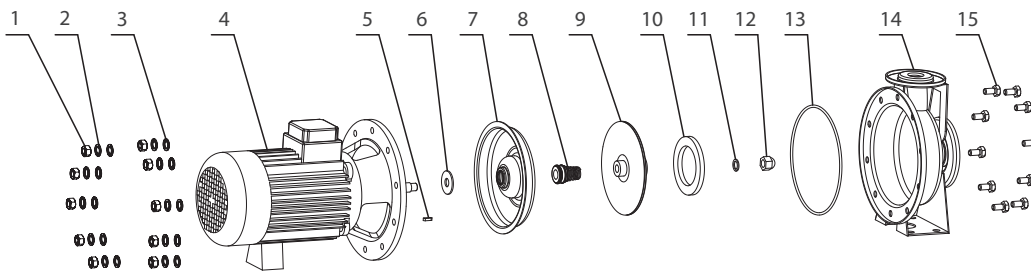
## Operating performance data

Water test temperature: 20°C, Performance: ISO2548C specifications for standard class C pumps.

Model (DINEN733)	A	Power		Pump efficiency %	Capacity																											
		kW	HP		l/min	0	100	150	200	300	333	360	400	450	500	600	650	700	800	1000	1200	1500	1800	1900	2000	2100	2200					
					m <sup>3</sup> /h	0	6.0	9.0	12	18	20	22	24	27	30	36	39	42	48	60	72	90	108	114	120	126	132					
					Head (m)																											
50-32-125/1.1	2.5	1.1	1.5	61	24	21.5	20.5	19.5	16.5	15																						
50-32-160/1.5	3.29	1.5	2.0	56	29.5	26	25	24	20	18																						
50-32-160/2.2	4.58	2.2	3.0	62	37	33.5	32.5	32	28.5	27																						
50-32-200/3.0	5.83	3.0	4.0	48	45	41	40	38	34	32																						
50-32-200/4.0	7.9	4.0	5.5	55	55	50	49	49	46	45	43																					
65-40-125/1.5	3.5	1.5	2.0	68	20			18.5	17	17	16.5	15	14	12.5	10		7															
65-40-125/2.2	4.58	2.2	3.0	74	26			23.5	22.5	22	21.5	21	20.5	19.5	16.5		13															
65-40-160/3.0	5.83	3.0	4.0	66	31			29	27.5	27	26.5	25.5	25	24	22		19															
65-40-160/4.0	7.9	4.0	5.5	66	39			35.5	34.5	34	33.5	32.5	32	31	29		26															
65-40-200/5.5	10.8	5.5	7.5	57	47			43	42	41.5	41	41	40.5	39	37		33															
65-40-200/7.5	14.9	7.5	10.0	62	57			53	52.5	52	51	50	49	48	46.5		44.5															
65-50-125/3.0	5.83	3.0	4.0	70	22.5							20	19.5	19	18.5		17.5	16	13	9												
65-50-125/4.0	7.9	4.0	5.5	72	25.5							23	22.5	22	21.5		20.5	20	17	13.5												
65-50-160/5.5	10.8	5.5	7.5	70	33							29.5	29	28.5	28		27	26	24	20												
65-50-160/7.5	14.9	7.5	10.0	71	39							36	35	34.5	34		33.5	32.5	29	24												
65-50-200/9.2	18.8	9.2	12.5	73	53									47	46.5		45	43.5	39	32												
65-50-200/11.0	21.1	11.0	15.0	72	57.5									52	51		50.5	50	47	41												
80-65-125/4.0	7.9	4.0	5.5	72												18	17.5	17	16	14	11.5	8	4.5									
80-65-125/5.5	10.8	5.5	7.5	74													22.5	22	21.5	20.5	18.5	16	12.5	8.5	7							
80-65-125/7.5	14.9	7.5	10	74													27.5	27	26.5	26	24	21.5	18	14	12	10.5						
80-65-160/9.2	18.8	9.2	12.5	74															31	30	28	26	23	18	16	14.5	13					
80-65-160/11.0	21.1	11.0	15.0	74																36	35	33	31	28	23	21	19.5	18	16.5			
80-65-200/15.0	28.9	15.0	20.0	75																	44	43	41	39	36	32	30	28	26	23		
80-65-200/18.5	34.6	18.5	25.0	75																		51	50	49	48	45	41	39	37	35	33	
80-65-200/22.0	40.2	22.0	30.0	75																			57	56	55	54	51	47	45.5	44	42	40

## ES Parts list

No	Description	No	Description	No	Description	No	Description	No	Description
1	Nut	4	Motor	7	Back cover	10	Neck ring	13	O ring
2	Spring Washer	5	Key	8	Mechanical seal	11	Spring Washer	14	Casing
3	Plain Washer	6	"V" Slinger	9	Impeller	12	Impeller nut	15	Bolt



## ED Parts list

No	Description	No	Description	No	Description	No	Description	No	Description	No	Description
1	Bolt	6	Bracket	11	Neck ring	16	Bolt	21	Bolt	26	Spring washer
2	Motor	7	Stub-shaft	12	Spring washer	17	Plain washer	22	Plain washer	27	Plain washer
3	Key	8	Back cover	13	Impeller nut	18	Spring washer	23	Spring washer	28	Bolt
4	Bolt	9	Mechanical seal	14	O ring	19	Nut	24	Nut	29	Key
5	Coupling guard	10	Impeller	15	Casing	20	Motor base	25	Nut		

