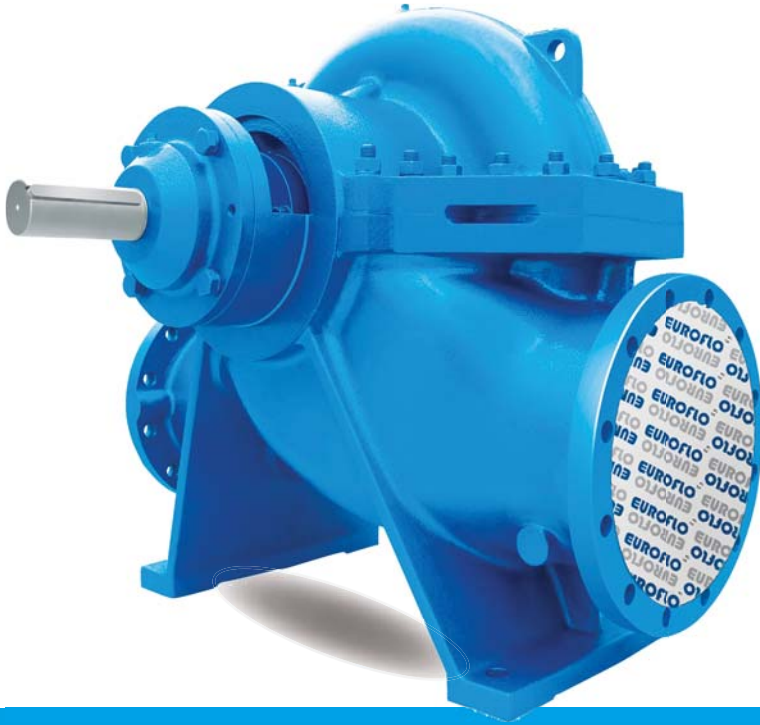


EUROFLOTM
where innovation flows



**Horizontal Axially
Split Casing Pumps**

ESCA series



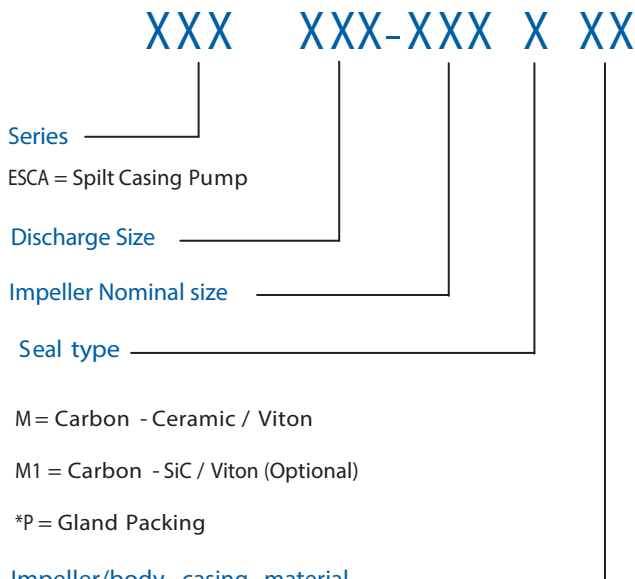
www.euroflopumps.com

Introduction

Coding System



e.g. **ESCA 125-230 M BC**



BC = Bronze impeller and Cast Iron Body
 BD = Bronze impeller and Ductile Iron Body
 CC = Cast Iron impeller and Body
 CD = Cast Iron impeller and Ductile Iron Body

Design : GB/T5657-95, Q/FZEF 001-2014 Standard
 Structure : Single-Stage, Double -Suction, Split -casing, Centrifugal Pump
 Flange : DIN 2501 PN16 GB / T17241.6 PN1.6

Material:
 Casing : Cast Iron, Ductile Iron optional
 Impeller : Bronze, Cast Iron optional
 Shaft : ASTM1045, ASTM420, ASTM304, ASTM316 optional
 Shaft Seal : Mechanical Seal and Gland Packing optional
 DN (mm) : 80~400

Operating Range:
 Max. Flow Rate (Q) : 36-3400m³/h
 Max. Head (H) : 8-190m
 Speed : 1480-2980 rpm (50Hz) ,
 : 1780-3580 rpm (60Hz)
 Max. Temp. : 85 °C standard; optional 105 °C
 Max. Pressure : 16 bar standard; optional 25 Bar
 Conveying Medium : Clean water

ESCA Series are Horizontal Split casing Double suction impeller with in-between bearing design, allows pumps run quietly and with minimal vibration. Coupled with dynamically balanced impeller the pumps life is greatly prolonged and therefore, increase MTBF (Mean Time Between Failure). This allows the pump to be mounted horizontally and also, vertically to save spaces.

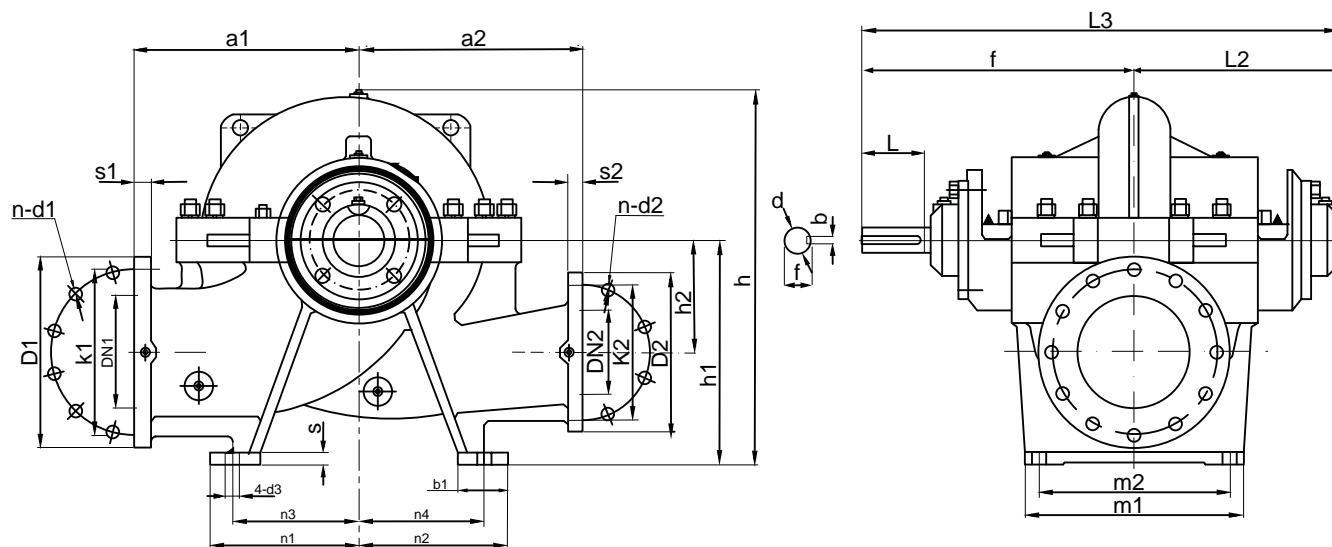
Shaft is fully sealed away from medium, no erosion and also high interchangeability.

Closed circulate cooling system is applied to its inner seal housing. Because of that, pump structure is simple and also easy to maintain.

Application:

- HVAC and Cooling Tower
- Municipal Water Supply
- Marine and Ship Building
- Power Plant
- Irrigation and agriculture
- Fire Fighting

Installation Dimension



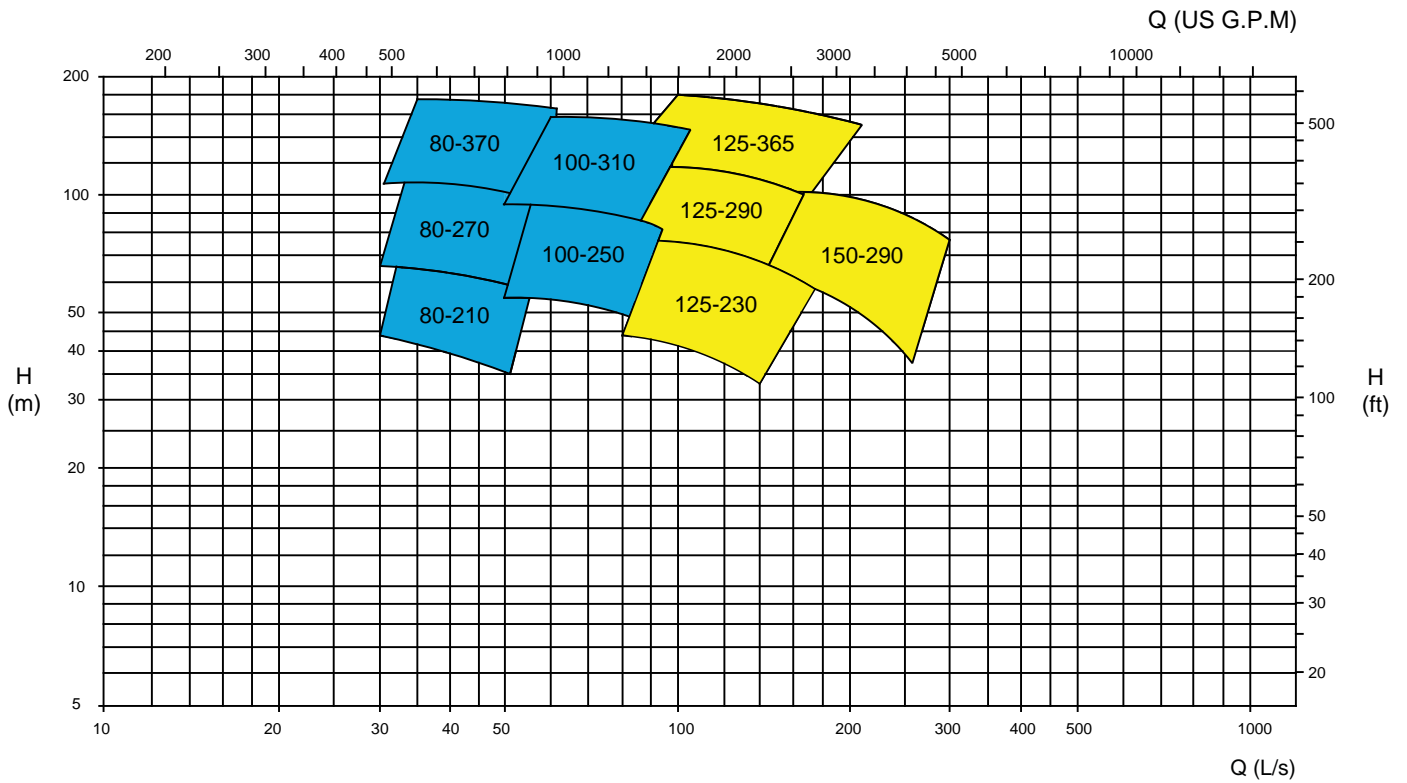
Model	DN1	DN2	Pump Dimension										Foot						Shaft				Weight kg
			a1	a2	f	L2	L3	h	h1	h2	m1	m2	n1	n2	n3	n4	b1	d3	s	d	b	L	
ESCA 80-210	125	80	300	300	385	300	685	490	315	140	320	270	205	205	170	170	80	22	Ø34	10	80	37.3	179
ESCA 80-270			528	200																			
ESCA 80-370			558	209																			
ESCA 100-250	150	100	330	330	485	365	850	570	355	170	390	340	235	235	200	200	80	22	Ø34	10	80	37.3	209
ESCA 100-310			605	257																			
ESCA 100-375			620	245																			
ESCA 125-230	200	125	370	370	540	420	960	620	400	200	390	340	265	265	225	225	90	26	Ø44	12	110	47.3	309
ESCA 125-290			635	293																			
ESCA 125-365			665	311																			
ESCA 125-500	200	150	450	450	540	420	960	720	400	200	390	340	320	320	280	280	85	26	Ø44	12	110	47.3	414
ESCA 150-290			660	323																			
ESCA 150-360			670	350																			
ESCA 150-460	250	200	450	450	540	420	960	710	500	240	480	430	315	315	280	280	75	25	Ø54	16	110	58.3	418
ESCA 150-605			885	755																			
ESCA 200-250			815	450																			
ESCA 200-320	250	250	450	450	629	479	1108	793	600	300	480	430	315	315	280	280	95	Ø30	25	16	145	68.4	450
ESCA 200-420			805	506																			
ESCA 200-520			830	551																			
ESCA 250-280	300	250	500	500	629	479	1108	925	600	300	480	430	400	400	350	350	100	Ø30	28	20	170	78.9	700
ESCA 250-370			985	906																			
ESCA 250-480			1060	1116																			
ESCA 250-600	350	300	550	500	629	479	1108	1010	630	300	500	400	400	400	350	350	100	Ø30	28	20	170	78.9	1116
ESCA 300-300			1072	792																			
ESCA 300-435			1072	847																			
ESCA 300-560	400	350	700	650	785	605	1390	1140	710	350	620	520	525	525	475	475	110	Ø30	22	180	89.4	1301	
ESCA 300-700			1255	1640																			
ESCA 350-360			1255	1640																			
ESCA 350-430	450	350	650	550	695	515	1210	1100	670	350	600	520	400	400	350	350	100	Ø30	22	170	78.9	1077	
ESCA 350-510			1200	1445																			
ESCA 350-575			1200	1456																			
ESCA 400-525	500	400	750	750	853	667	1520	1400	900	420	780	630	525	525	475	475	110	Ø35	25	210	111.4	1600	
ESCA 400-665			1000	2000																			

Flange Dimension (ISO7005.2 DIN2501 PN16 GB/T17241.6 PN1.6)

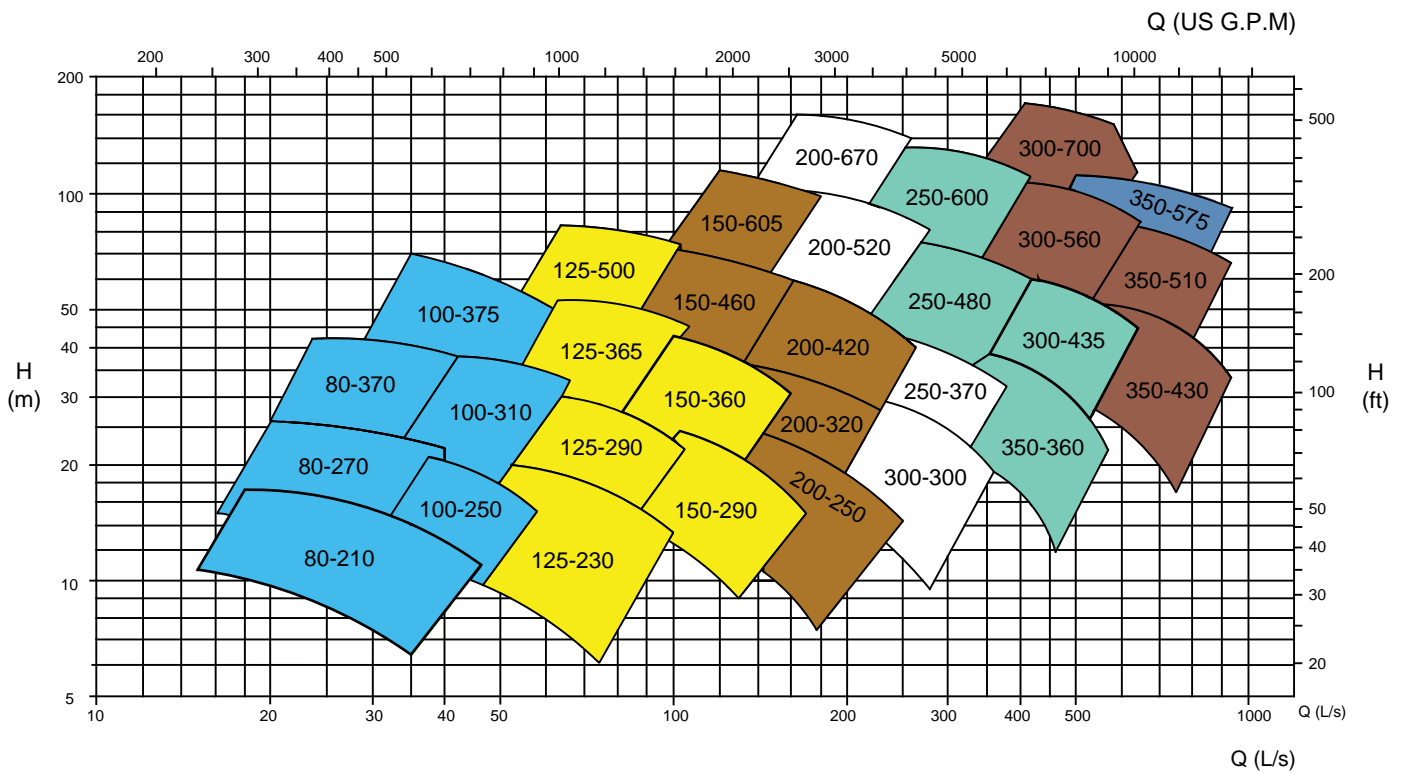
DN1/DN2	80	100	125	150	200	250	300	350	400	450	500	600	700
K1/K2	160	180	210	240	295	355	410	470	525	585	650	770	840
D1/D2	200	220	250	285	340	405	460	520	580	640	715	840	910
S1/S2	22	24	26	26	30	32	34	38	40	40	46	54	54
n-d1/n-d2	8-Ø17.5	8-Ø17.5	8-Ø17.5	8-Ø22	12-Ø22	12-Ø26	12-Ø26	16-Ø26	16-Ø30	20-Ø30	20-Ø33	20-Ø36	24-Ø36

Performance Chart - 50Hz

n=2980rpm



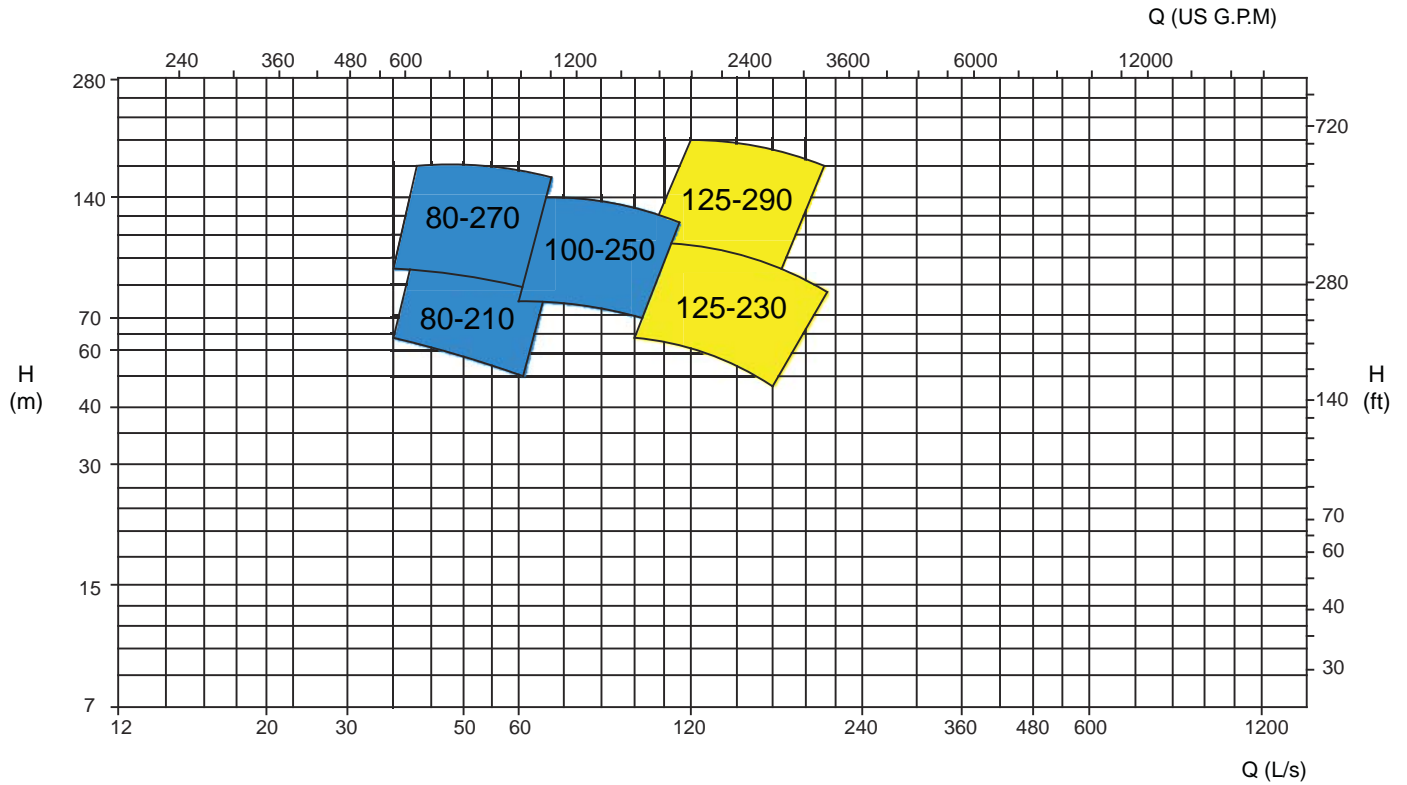
n=1480rpm



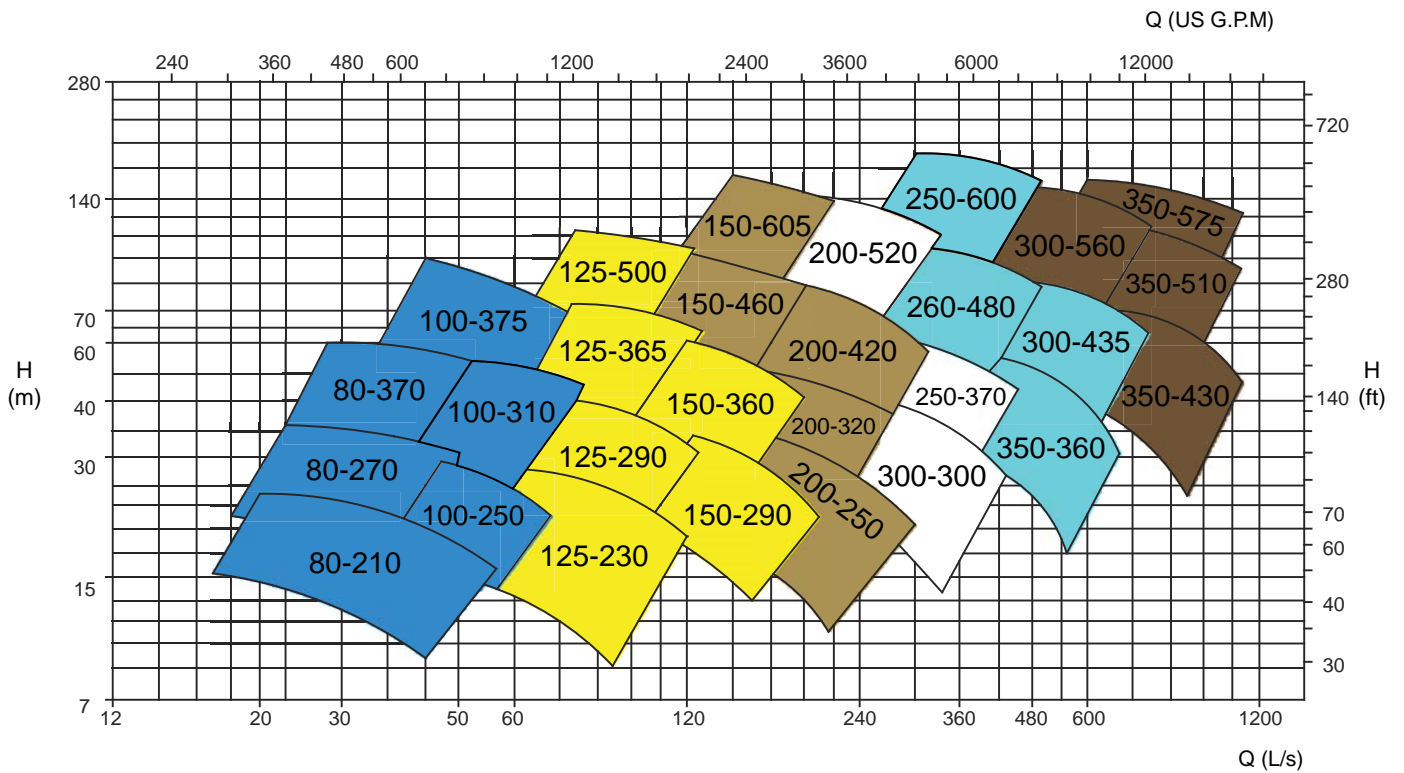
Performance to ISO9906 Grade 2 for clean cold water only

Performance Chart - 60Hz

n=3580 rpm

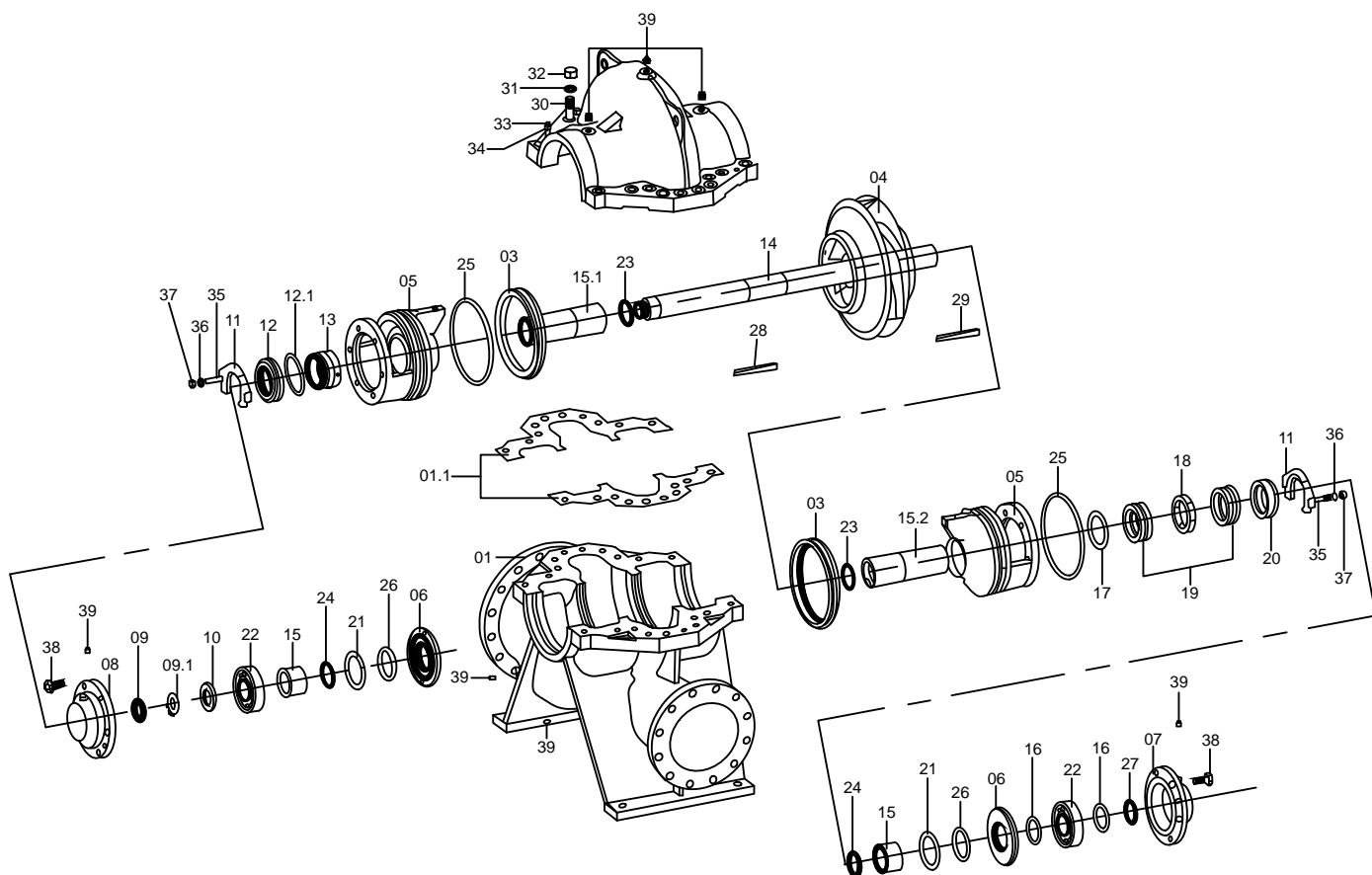


n=1780 rpm



Performance to ISO9906 Grade 2 for clean cold water only

Exploded View & Part List



Code	Part Name	Code	Part Name	Code	Part Name
01	Casing-Bottom	13	Mech. Seal	28	Felting
01.1	Casing Gasket	14	Shaft	27	External. Circlips
02	Casing-Top	15	Shaft Sleeve-Short	28	Key
03	Wear Ring	15.1	Shaft Sleeve	29	Key
04	Impeller	15.2	Packing Shaft Sleeve	30	Screw Bolt
05	Seal Frame	16	Bearing Seal Plate	91	Spring Washer
06	Bearing Cover	17	Packing Seal Plate	32	Screw Nut
07	Bearing Frame-Driving End	18	Lantern Ring	33	Pin
08	Bearing Frame-Non-driving End	19	Gland	34	Screw Nut
09	Screw Nut	20	Packing Cover	35	Screw Bolt
09.1	Lock Washer for Nut	21	Slinger	38	Flat Gasket
10	Bearing Slinger	22	Ball Bearing	37	Screw Nut
11	Seal Plate	23	O-ring	38	Screw Bolt
12	Seal Cover	24	O-ring	39	Plug
12.1	Seal Cover Gasket	25	O-ring		



Euroflo Pumps International Pte Ltd

No.1 Joo Koon Way Singapore 628942 Tel: +65 6861 3836 Fax: +65 6861 3936

40201/220801