

**EUROFLO**<sup>TM</sup>  
*where innovation flows*



**Vertical In-line Close Coupled  
Circulation Centrifugal Pumps**

**EILM** *series*



[www.euroflopumps.com](http://www.euroflopumps.com)

**Coding System**

e.g. **EILM 40/3213 M BC A2-0055-B**

**XXXX XXX/XXXXX X XX XX-XXXX-X**

**Series**

EILM = Vertical In-line Pumps

**Suction and discharge**

**Impeller dia. and performance**

**Seal type**

M = Carbon - Ceramic/Viton      M1 = Carbon - SiC/Viton (Optional)  
\*P = Gland Packing                  M2 = Carbon - SiC/EPDM

**Impeller/body casing material**

BC = Bronze impeller and Cast Iron Body  
BD = Bronze impeller and Ductile Iron Body  
BB = Bronze impeller and Body  
CC = Cast Iron impeller and Body  
CD = Cast Iron impeller and Ductile Iron Body  
KK = SS316 impeller and Body  
KC = SS316 impeller and Cast Iron Body  
SS = SS304 impeller and Body  
SC = SS304 impeller and Cast Iron Body

**Special code**

S4 = SS304 Shaft                      \*\*B2 = 60Hz / 2 Poles  
K6 = SS316 Shaft                    \*\*B4 = 60Hz / 4 Poles  
\*\*A2 = 50Hz / 2 Poles                \*\*C4 = 50Hz / 60Hz / 4 Poles (dual frequency)  
\*\*A4 = 50Hz / 4 Poles                \*\*C2 = 50Hz / 60Hz / 2 Poles (dual frequency)  
\*\*ZZ = Special Motor / Voltage

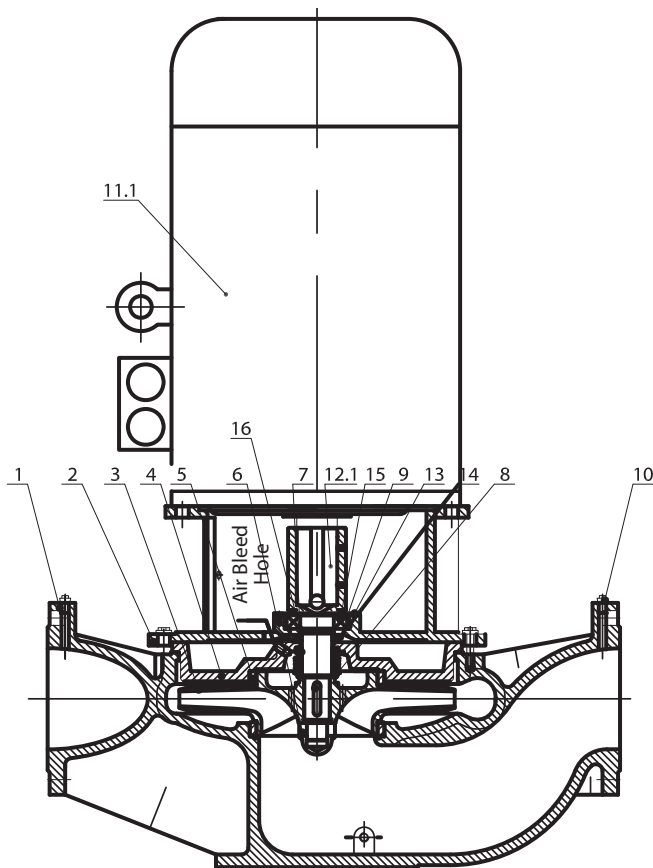
**Motor Rating**

eg.0005 = 0.55kW                    0055 = 5.5kW  
    0500 = 50kW  
    5000 = 500kW

**Motor Type**

eg. Stub Shaft                        (B) Barepump  
Extended Shaft                        (M) Mitsugi Motor  
    (S) Siemens Motor  
    01 - Big Bearing  
    02 - No Bearing

**Introduction**



**EILM** series vertical in-line centrifugal pump is designed, according to EN733/DIN24255.

The pumps are applicable for clean water, with wide range of application from water supply, environmental machinery, irrigation, mines, air-conditioning, fire fighting, and cooling towers. We have incorporated extra ball bearing near the Mech Seal to increase stabilities and strength. This allow pumps to operate at a wider range without affecting the seals and the motor bearings life due to vibration.

The closed coupled, stub shaft design allows for quick alignment of motor and pumps, at the same time allowing user all over the world to use their preferred motor brand purchased locally. We uses motor according to IEC standard.

**Type:** Vertical, Single Stage, Single Suction, In-Line Centrifugal Pump

**Design:** BS EN733/DIN24255 standard

**Flange:** DIN2501 (ISO7005.2 standard)  
ANSI B16.5 Class 150LB optional

**Rotation:** Clockwise viewing from the drive side

**Material:**

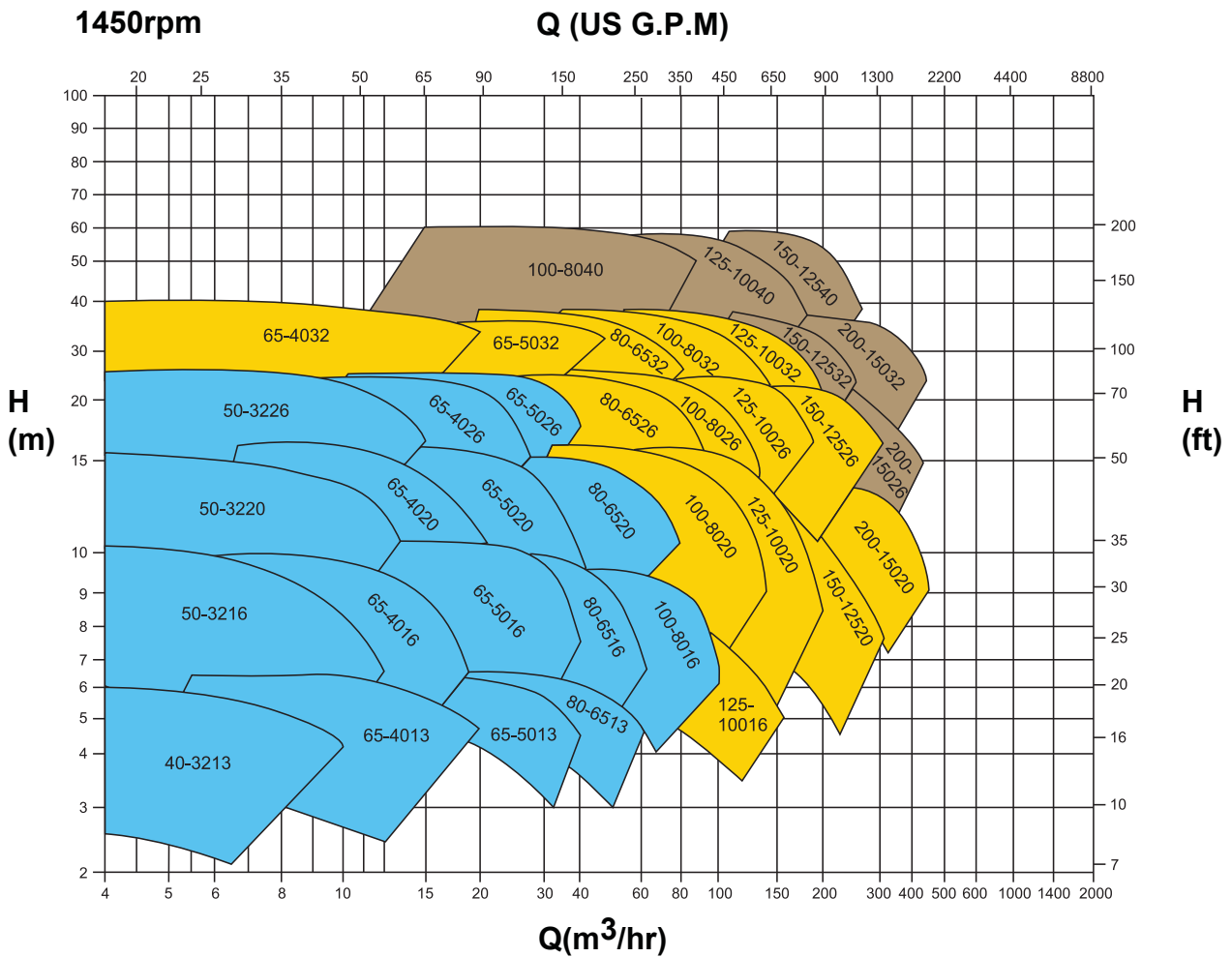
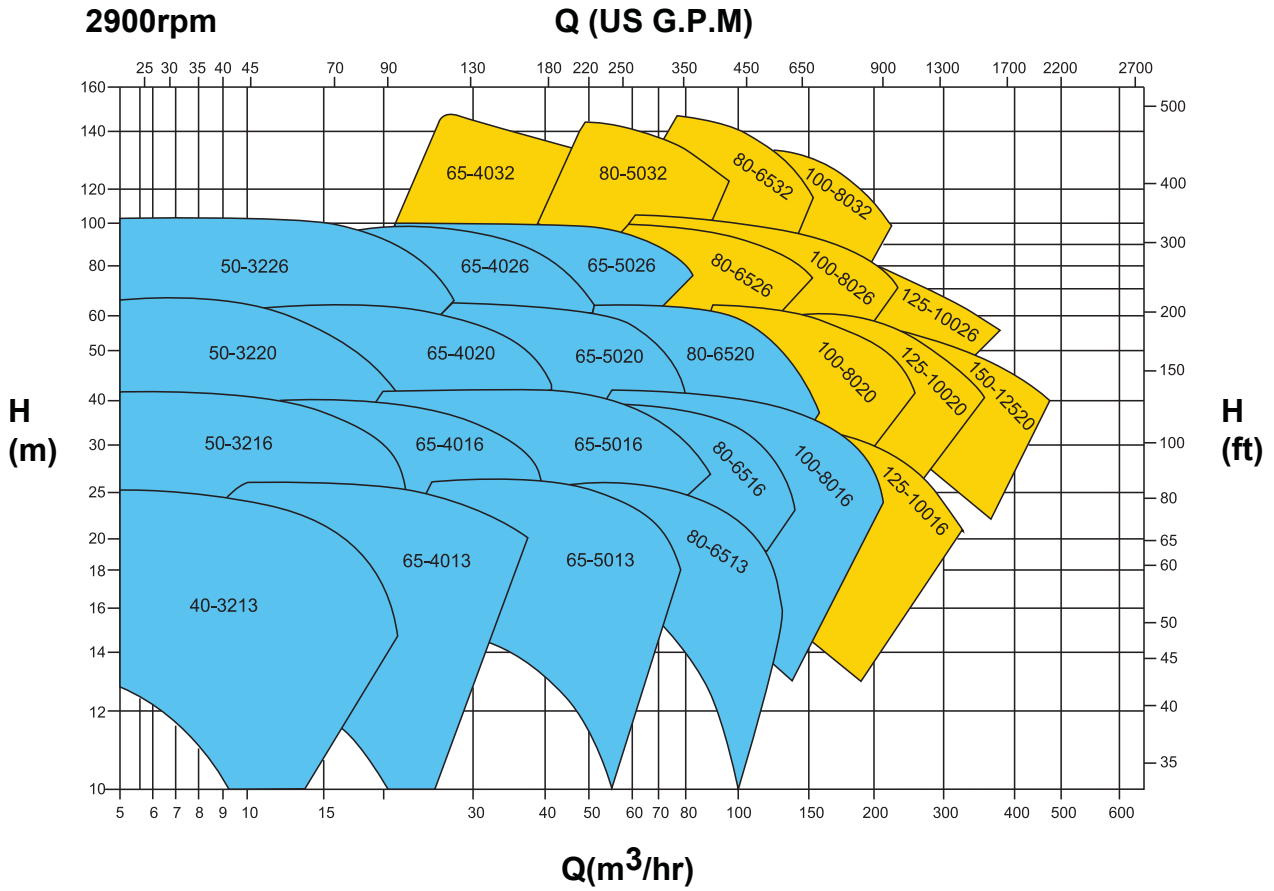
Casing: Cast Iron standard, ductile iron optional  
Impeller: Bronze and Cast iron standard, Stainless steel optional  
Shaft: SS420 standard, SS304 and SS316 optional  
Shaft Seal: Mechanical seal (Carbon-Sic/Viton)

**Operating range:**

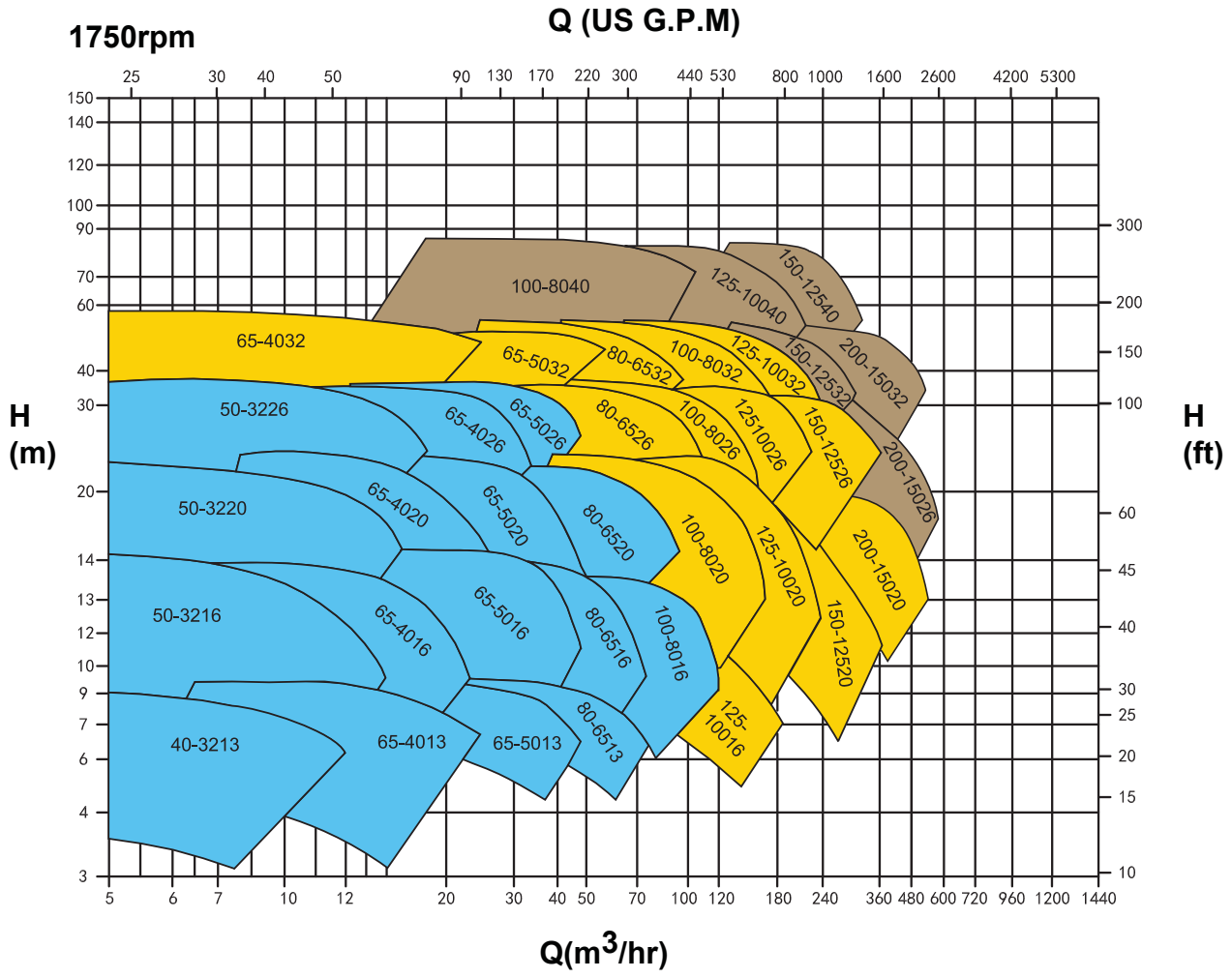
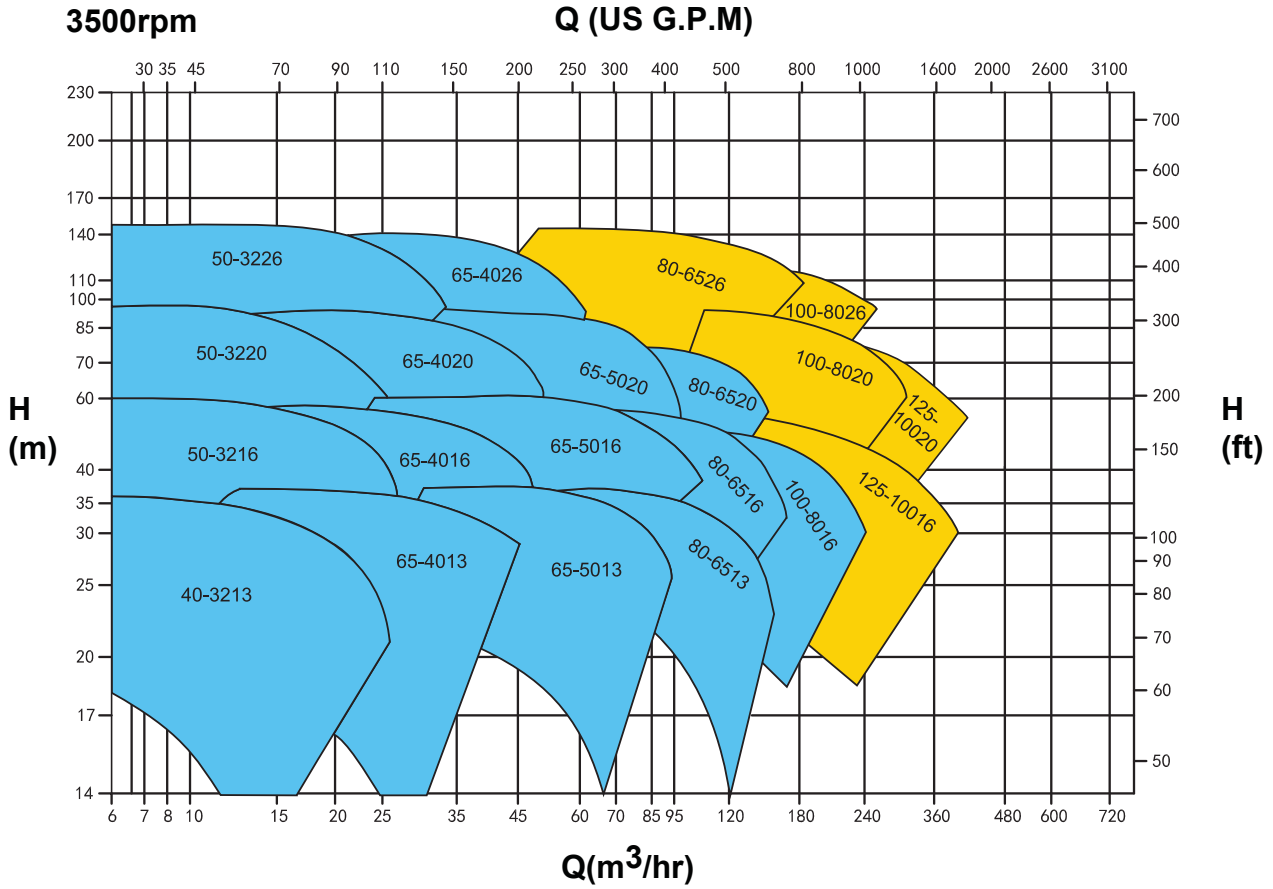
**DN** 25 - 300  
**Q** 2 - 450m<sup>3</sup>/hr  
**O.P.** up to 16bar standard  
**H** up to 2 - 100m  
**Ns** 1450 - 2900rpm (50hz)  
1750 - 3600rpm (60Hz)  
**t** -10° C to 105°

Part No.	Part Name
16	Circlip for Shaft
15	Bearing
14	Flexible Washer
13	Bearing Cover
12.1	Pump Shaft
11.1	IEC Standard Motor
10	Screw Plug
9	Slinger
8	Seal Seat
7	Mechanical Seal
6	Impeller Nut
5	Wear Ring
4	Casing Cover
3	Impeller
2	Adapter
1	Volute Casing

**Performance Chart - 50Hz**



**Performance Chart - 60Hz**



**Performance Data - 50Hz, 2900RPM**

No.	Model	Impeller dia.(mm)	Flow (m³h)	Head (m)	Power (kw)	Motor type	Power (kw)
1	EILM40-3213-A2-0007	100	6.5	12.5	0.46	Y2-802-2	0.75
			10.8	11.3	0.55		
			12.9	10.2	0.59		
2	EILM40-3213-A2-0011	110	7.2	15.2	0.72	Y2-802-2	1.1
			12	13.5	0.81		
			14	12.5	0.87		
3	EILM40-3213-A2-0015	120	7.8	18	0.89	Y2-90S-2	1.5
			13	16.2	1.01		
			15.5	14.7	1.07		
4	EILM40-3213-A2-0022	130	8.5	21.2	1.04	Y2-90L-2	2.2
			14	19	1.23		
			17	17.2	1.32		
5	EILM40-3213-A2-0022	139	9	24.5	1.23	Y2-90L-2	2.2
			15	22	1.47		
			18	20	1.58		
6	EILM50-3216-A2-0022	135	8.5	22	1.28	Y2-90L-2	2.2
			14	20	1.59		
			17	19	1.76		
7	EILM50-3216-A2-0030	145	9	27.5	1.65	Y2-100L-2	3
			15	25	2.03		
			18	23.3	2.21		
8	EILM50-3216-A2-0040	155	9.8	31.4	1.93	Y2-112M-2	4
			16	29	2.38		
			19.5	26.5	2.61		
9	EILM50-3216-A2-0040	165	10.5	35.7	2.22	Y2-112M-2	4
			17	33	2.78		
			21	30	3.06		
10	EILM50-3216-A2-0055	174	11	40	2.5	Y2-132S1-2	5.5
			18	37	3.18		
			22	34	3.51		
11	EILM50-3220-A2-0055	175	9	40.5	2.91	Y2-132S1-2	5.5
			15	37.5	3.56		
			18	33.9	3.89		
12	EILM50-3220-A2-0075	185	9	45.5	3.38	Y2-132S2-2	7.5
			15	42.5	4.11		
			19	37.5	4.71		
13	EILM50-3220-A2-0075	195	10	50	4.05	Y2-132S2-2	7.5
			16.5	46.5	4.82		
			20	41.5	5.41		
14	EILM50-3220-A2-0075	205	10.5	55.7	4.54	Y2-132S2-2	7.5
			17	51	5.66		
			21	45	6.35		
15	EILM50-3220-A2-0110	214	11	60	5.3	Y2-160M1-2	11
			18	55	6.6		
			22	50	7.19		
16	EILM50-3226-A2-0150	225	11.9	65.4	4.95	Y2-160M2-2	15
			22.2	59.6	6.19		
			30.7	50.1	7.43		
17	EILM50-3226-A2-0150	235	12.5	71.3	5.64	Y2-160M2-2	15
			23.1	65	7.05		
			32	54.7	8.46		
18	EILM50-3226-A2-0150	245	13	77.5	6.39	Y2-160M2-2	15
			24.1	70.6	7.99		
			33.4	59.4	9.59		

No.	Model	Impeller dia.(mm)	Flow (m³h)	Head (m)	Power (kw)	Motor type	Power (kw)
19	EILM50-3226-A2-0150	255	13.5	84	7.21	Y2-160M2-2	15
			25.1	76.5	9.01		
			34.8	64.4	10.8		
20	EILM50-3226-A2-0185	264	14	90	8.01	Y2-160L-2	18.5
			26	82	10.1		
			36	69	12.1		
21	EILM65-4013-A2-0015	100	12.9	12.9	0.86	Y2-90S-2	1.5
			21.7	11.8	1.07		
			25.8	10.8	1.22		
22	EILM65-4013-A2-0022	110	14.2	15.6	1.14	Y2-90L-2	2.2
			23.8	14.3	1.42		
			28.4	13	1.55		
23	EILM65-4013-A2-0030	120	15.5	18.5	1.48	Y2-100L-2	3
			26	17	1.85		
			31	15.5	2.01		
24	EILM65-4013-A2-0040	130	16.8	22	1.8	Y2-112M-2	4
			28	20.2	2.3		
			33.6	18.8	2.56		
25	EILM65-4013-A2-0040	139	18	25.5	2.08	Y2-112M-2	4
			30	23.5	2.74		
			36	21.5	3.03		
26	EILM65-4016-A2-0030	135	14	23.7	1.71	Y2-100L-2	3
			23	21	2.09		
			28	19	2.29		
27	EILM65-4016-A2-0040	145	15	27.4	2.11	Y2-112M-2	4
			25	24.3	2.59		
			30	21.9	2.84		
28	EILM65-4016-A2-0055	155	16	31.3	2.58	Y2-132S1-2	5.5
			26.7	27.8	3.16		
			32	25	3.46		
29	EILM65-4016-A2-0055	165	17	34.8	3.16	Y2-132S1-2	5.5
			28.5	30.5	3.82		
			34	27.6	4.19		
30	EILM65-4016-A2-0075	174	18	39.5	3.65	Y2-132S2-2	7.5
			30	35	4.47		
			36	31.5	4.9		
31	EILM65-4020-A2-0075	175	14.8	41.7	4	Y2-132S2-2	7.5
			24.7	38.2	5.04		
			29.6	34.9	5.43		
32	EILM65-4020-A2-0075	185	15.7	46.6	4.51	Y2-132S2-2	7.5
			26	42.8	5.73		
			31.3	39	6.18		
33	EILM65-4020-A2-0110	195	16.5	51.8	5.28	Y2-160M1-2	11
			27.5	47.5	6.71		
			33	43.3	7.24		
34	EILM65-4020-A2-0110	205	17	57.4	5.72	Y2-160M1-2	11
			29	52.4	7.46		
			34.5	48	8.05		
35	EILM65-4020-A2-0110	214	18	63	6.3	Y2-160M1-2	11
			30	58	8.17		
			36	53	8.96		
36	EILM65-4026-A2-0150	225	17	64	8.59	Y2-160M2-2	15
			28	60	10.8		
			34	54	11.58		

**Performance Data - 50Hz, 2900RPM**

No.	Model	Impeller dia.(mm)	Flow (m³/h)	Head (m)	Power (kw)	Motor type	Power (kw)
37	EILM65-4026-A2-0185	235	18	69	9.78	Y2-160L-2	18.5
			29	65	12.31		
			35	59	13.2		
38	EILM65-4026-A2-0185	245	18.5	76	11.1	Y2-160L-2	18.5
			30.5	71	14		
			37	64	15		
39	EILM65-4026-A2-0220	255	19.5	82	12.5	Y2-180M-2	22
			32	76.5	15.7		
			38.5	69	16.9		
40	EILM65-4026-A2-0220	264	20	88	13.9	Y2-180M-2	22
			33	82	17.5		
			40	74	18.7		
41	EILM65-4032-A2-0300	270	18.00	100.40	18.96	Y2-200L1-2	30
			29.80	93.60	21.68		
			36.00	84.00	24.32		
42	EILM65-4032-A2-0370	285	19.00	112.00	19.92	Y2-200L2-2	37
			31.40	104.00	24.16		
			38.00	94.00	27.04		
43	EILM65-4032-A2-0370	300	20.00	124.00	23.28	Y2-200L2-2	37
			33.00	116.00	28.16		
			40.00	104.00	31.52		
44	EILM65-4032-A2-0450	315	21.00	138.00	25.84	Y2-225M-2	45
			34.00	128.00	30.80		
			41.00	116.00	34.56		
45	EILM65-4032-A2-0450	329	22.00	152.00	28.48	Y2-225M-2	45
			36.00	140.00	33.84		
			43.00	128.00	38.40		
46	EILM65-5013-A2-0055	120	31	17.9	2.61	Y2-132S1-2	5.5
			52	15	3.3		
			62	14	3.53		
47	EILM65-5013-A2-0055	130	34	21	3.31	Y2-132S1-2	5.5
			56	18	4.15		
			67	16.6	4.49		
48	EILM65-5013-A2-0075	139	36	24	4.05	Y2-132S2-2	7.5
			60	20.5	5.07		
			72	18.9	5.49		
49	EILM65-5016-A2-0075	135	31	22.6	3.44	Y2-132S2-2	7.5
			50	20	4.16		
			60	16.8	4.59		
50	EILM65-5016-A2-0075	145	33	26	4.25	Y2-132S2-2	7.5
			54	23	5.14		
			65	19	5.71		
51	EILM65-5016-A2-0110	155	35.5	30	5.22	Y2-160M1-2	11
			58	26	6.28		
			70	21.5	6.97		
52	EILM65-5016-A2-0110	165	38	33.5	6.37	Y2-160M1-2	11
			61.5	30	7.61		
			74	24.7	8.4		
53	EILM65-5016-A2-0110	174	40	37.5	7.36	Y2-160M1-2	11
			65	33	8.89		
			78	27.5	9.85		
54	EILM65-5020-A2-0110	175	29.44	40.12	5.90	Y2-160M1-2	11
			49.07	35.78	7.97		
			58.88	32.10	9.03		

No.	Model	Impeller dia.(mm)	Flow (m³/h)	Head (m)	Power (kw)	Motor type	Power (kw)
55	EILM65-5020-A2-0150	185	31	45	6.96	Y2-160M2-2	15
			52	40	9.45		
			62	36	10.67		
56	EILM65-5020-A2-0150	195	33	49.5	8.25	Y2-160M2-2	15
			55	44	11.32		
			65	40	12.49		
57	EILM65-5020-A2-0185	205	34.5	55	9.48	Y2-160L-2	18.5
			57.5	49	12.81		
			69	44	14.52		
58	EILM65-5020-A2-0185	214	36	60	10.78	Y2-160L-2	18.5
			60	53.5	14.57		
			72	48	16.52		
59	EILM65-5026-A2-0220	225	34	64.5	12.49	Y2-180M-2	22
			55	59	16.62		
			68	52.5	18.59		
60	EILM65-5026-A2-0300	235	36	70	14.62	Y2-200L1-2	30
			58	64	18.79		
			71	57	21.18		
61	EILM65-5026-A2-0300	245	37	76.7	16.12	Y2-200L1-2	30
			60.3	70	21.08		
			74.2	62	24.01		
62	EILM65-5032-A2-0450	270	40	92	24.56	Y2-225M-2	45
			66	84	32.48		
			78	80	34		
63	EILM65-5032-A2-0550	285	42	104	27.12	Y2-250M-2	55
			69.4	96	36.32		
			83.2	88	40.08		
64	EILM80-6513-A2-0055	120	52	15	4.12	Y2-132S2-2	5.5
			86	10.5	4.43		
			103.5	6	4.63		
65	EILM80-6513-A2-0075	130	56	18	4.99	Y2-132S2-2	7.5
			94	12	5.83		
			112	7	5.88		
66	EILM80-6513-A2-0110	139	60	20.5	6.1	Y2-160M1-2	11
			100	14	6.88		
			120	8	7.19		
67	EILM80-6516-A2-0110	135	46	21.5	4.52	Y2-160M1-2	11
			77	16.6	5.68		
			93	13	6.14		
68	EILM80-6516-A2-0110	145	50	24.7	5.6	Y2-160M1-2	11
			83	19	7.05		
			100	15	7.6		
69	EILM80-6516-A2-0110	155	53	28	6.84	Y2-160M1-2	11
			89	22	8.61		
			107	17	9.38		
70	EILM80-6516-A2-0150	165	57	32	8.25	Y2-160M2-2	15
			95	24.7	10.38		
			114	20	11.35		
71	EILM80-6516-A2-0185	174	60	35.5	9.68	Y2-160L-2	18.5
			100	27.5	12.17		
			120	22	13.14		
72	EILM80-6520-A2-0150	175	54	37	9.56	Y2-160M2-2	15
			90	32	11.95		
			108	27	12.68		

**Performance Data - 50Hz, 2900RPM**

No.	Model	Impeller dia.(mm)	Flow (m³/h)	Head (m)	Power (kw)	Motor type	Power (kw)	No.	Model	Impeller dia.(mm)	Flow (m³/h)	Head (m)	Power (kw)	Motor type	Power (kw)
73	EILM80-6520-A2-0185	185	57	42	11.22	Y2-160L-2	18.5	92	EILM100-8020-A2-0450	214	115	54.5	28.29	Y2-225M-2	45
			95	36	14.13						190	46.5	36.17		
			114	30.5	15.28						225	41	40.02		
74	EILM80-6520-A2-0220	195	60	46.5	13.14	Y2-180M-2	22	93	EILM100-8026-A2-0550	225	98.00	65.20	29.28	Y2-250M-2	55
			100	40	16.55						162.00	55.32	37.28		
			120	33.7	17.55						196.00	47.20	40.40		
75	EILM80-6520-A2-0300	205	63	51.5	15.27	Y2-200L1-2	30	94	EILM100-8026-A2-0550	235	103.26	71.00	33.35	Y2-250M-2	55
			105	44	19.23						169.13	60.02	42.43		
			126	37.5	20.39						204.73	51.35	46.04		
76	EILM80-6520-A2-0300	214	66	56	17.37	Y2-200L1-2	30	95	EILM100-8026-A2-0750	245	107.65	77.17	37.79	Y2-280S-2	75
			110	48	21.87						176.33	65.45	48.08		
			132	40.6	23.19						213.45	55.81	52.18		
77	EILM80-6526-A2-0370	225	61	65.5	19.81	Y2-200L2-2	37	96	EILM100-8026-A2-0750	255	112.05	83.60	42.61	Y2-280S-2	75
			102	61	26.54						183.52	70.91	54.21		
			122	54	29.32						222.16	60.46	58.83		
78	EILM80-6526-A2-0370	235	64	71.3	22.57	Y2-200L2-2	37	97	EILM100-8032-A2-0750	270	98.48	84.86	41.79	Y2-280S-2	75
			107	66.5	30.28						164.13	70.04	52.00		
			128	58.7	33.39						196.96	57.92	55.98		
79	EILM80-6526-A2-0450	245	66	78	25.52	Y2-225M-2	45	98	EILM125-10016-A2-0300	180	151.2	30.4	19.12	Y2-200L1-2	30
			111.4	72	34.24						216	23.6	20.64		
			134	64	38.64						270	15.6	22		
80	EILM80-6526-A2-0550	255	69.4	84	28.88	Y2-250M-2	55	99	EILM125-10020-A2-0300	175	147.20	36.65	19.73	Y2-200L1-2	30
			116	78.4	38.64						232.24	28.09	23.84		
			140	68	42.64						278.04	21.67	25.77		
81	EILM80-6526-A2-0550	264	72	90	32	Y2-250M-2	55	100	EILM125-10020-A2-0370	185	155.61	40.95	23.31	Y2-200L2-2	37
			120	84	42.88						245.51	31.39	28.17		
			144	74	47.36						293.93	24.21	30.44		
82	EILM80-6532-A2-0550	270	60	100	34.96	Y2-250M-2	55	101	EILM125-10020-A2-0450	195	164.02	45.50	27.30	Y2-225M-2	45
			102	90.4	42.56						258.79	34.87	32.99		
			122	84	47.6						309.81	26.90	35.65		
83	EILM80-6532-A2-0750	285	64	110.8	40.32	Y2-280S-2	75	102	EILM125-10020-A2-0550	205	172.43	50.29	31.72	Y2-250M-2	55
			108	100	51.68						272.06	38.54	38.33		
			130	92	58.88						325.70	29.73	41.42		
84	EILM100-8016-A2-0150	145	83	22	8.76	Y2-160M2-2	15	103	EILM125-10020-A2-0550	214	180.00	54.80	36.08	Y2-250M-2	55
			135	17.5	10.75						284.00	42.00	43.60		
			162.5	10	11.57						340.00	32.40	47.12		
85	EILM100-8016-A2-0185	155	89	25.4	10.71	Y2-160L-2	18.5	86	EILM100-8016-A2-0220	165	95	29	12.91	Y2-180M-2	22
			144	20	13.13						154	22.5	15.83		
			174	11	14.14						185	13	17.05		
87	EILM100-8016-A2-0300	174	100	32	15.14	Y2-200L1-2	30	87	EILM100-8016-A2-0300	174	100	32	15.14	Y2-200L1-2	30
			162	25.3	18.57						162	25.3	18.57		
			195	14.4	20						195	14.4	20		
88	EILM100-8020-A2-0300	175	94	36.5	15.47	Y2-200L1-2	30	88	EILM100-8020-A2-0300	175	94	36.5	15.47	Y2-200L1-2	30
			155	31	19.78						155	31	19.78		
			184	27.4	21.89						184	27.4	21.89		
89	EILM100-8020-A2-0300	185	99	41	18.28	Y2-200L1-2	30	89	EILM100-8020-A2-0300	185	99	41	18.28	Y2-200L1-2	30
			164	34.8	23.37						164	34.8	23.37		
			195	30.5	25.96						195	30.5	25.96		
90	EILM100-8020-A2-0370	195	105	45	21.54	Y2-200L2-2	37	90	EILM100-8020-A2-0370	195	105	45	21.54	Y2-200L2-2	37
			173	38.6	27.36						173	38.6	27.36		
			205	34	30.28						205	34	30.28		



**Performance Data - 50Hz, 1450RPM**

No.	Model	Impeller dia.(mm)	Flow (m³/h)	Head (m)	Power (kw)	Motor type	Power (kw)
1	EILM40-3213-A4-0005	139	4.5	5.9	0.16	Y2-801-4	0.55
			7.5	5.4	0.2		
			9	4.8	0.21		
2	EILM50-3216-A4-0005	174	6	9.5	0.35	Y2-801-4	0.55
			9	9	0.42		
			11	8.3	0.46		
3	EILM50-3220-A4-0011	205	5.8	13.7	0.61	Y2-905-4	1.1
			8.6	12.9	0.72		
			10.5	12	0.79		
4	EILM50-3220-A4-0011	214	6	15	0.66	Y2-905-4	1.1
			9	14	0.79		
			11	13.2	0.89		
5	EILM50-3226-A4-0022	245	6.5	19.4	1	Y2-100L1-4	2.2
			10	18.5	1.23		
			12	17.4	1.37		
6	EILM50-3226-A4-0022	255	6.3	21	1.12	Y2-100L1-4	2.2
			10.8	20	1.39		
			12.6	19	1.53		
7	EILM50-3226-A4-0030	264	7	22.5	1.25	Y2-100L2-4	3
			11	21.4	1.55		
			13	20.5	1.71		
8	EILM65-4013-A4-0007	139	9	6.3	0.3	Y2-802-4	0.75
			15	5.8	0.37		
			18	5.3	0.41		
9	EILM65-4016-A4-0011	174	9	9.7	0.5	Y2-905-4	1.1
			15	8.5	0.58		
			18	7.6	0.64		
10	EILM65-4020-A4-0011	195	8.2	12.6	0.6	Y2-905-4	1.1
			13.7	11.6	0.81		
			16.4	10.6	0.9		
11	EILM65-4020-A4-0015	205	8.6	14	0.69	Y2-90L-4	1.5
			14.4	12.9	0.91		
			17.2	11.8	1.02		
12	EILM65-4020-A4-0015	214	9	15.2	0.79	Y2-90L-4	1.5
			15	14	1.04		
			18	12.8	1.16		
13	EILM65-4026-A4-0022	225	8.5	16	1.23	Y2-100L1-4	2.2
			13.6	14.9	1.48		
			17	13.1	1.6		
14	EILM65-4026-A4-0022	235	8.9	17.4	1.36	Y2-100L1-4	2.2
			14.2	16.2	1.64		
			17.8	14.3	1.78		
15	EILM65-4026-A4-0030	245	9.3	18.9	1.49	Y2-100L2-4	3
			14.9	17.7	1.82		
			18.6	15.5	1.98		
16	EILM65-4026-A4-0030	255	9.66	20.5	1.64	Y2-100L2-4	3
			15.5	19.1	2.01		
			19.3	16.8	2.18		
17	EILM65-4026-A4-0030	264	10	22	1.77	Y2-100L2-4	3
			16	20.5	2.18		
			20	18	2.38		
18	EILM65-4032-A4-0040	270	9	25.1	2.37	Y2-112M-4	4
			14.9	23.4	2.71		
			18	21	3.04		
19	EILM65-4032-A4-0040	285	9.5	28	2.49	Y2-112M-4	4
			15.7	26	3.02		
			19	23.5	3.38		
20	EILM65-4032-A4-0055	300	10	31	2.91	Y2-132S-4	5.5
			16.5	29	3.52		
			20	26	3.94		
21	EILM65-4032-A4-0055	315	10.5	34.5	3.23	Y2-132S-4	5.5
			17	32	3.85		
			20.5	29	4.32		
22	EILM65-4032-A4-0055	329	11	38	3.56	Y2-132S-4	5.5
			18	35	4.23		
			21.5	32	4.8		

No.	Model	Impeller dia.(mm)	Flow (m³/h)	Head (m)	Power (kw)	Motor type	Power (kw)
23	EILM65-5013-A4-0011	139	18	6	0.51	Y2-90S-4	1.1
			30	5.1	0.57		
			36	4.3	0.66		
24	EILM65-5016-A4-0015	174	20	9.6	0.87	Y2-90L-4	1.5
			32	8.3	1.11		
			38	7.2	1.21		
25	EILM65-5020-A4-0022	195	16	12.5	1.05	Y2-100L1-4	2.2
			27	11.3	1.39		
			33	9.5	1.57		
26	EILM65-5020-A4-0022	205	17	14	1.22	Y2-100L1-4	2.2
			29	12	1.62		
			34	11	1.79		
27	EILM65-5020-A4-0030	214	18	15	1.39	Y2-100L2-4	3
			30	13.4	1.83		
			36	11.6	2.07		
28	EILM65-5026-A4-0030	225	17	16.5	1.62	Y2-100L2-4	3
			27	14.6	2.05		
			32	13.6	2.25		
29	EILM65-5026-A4-0040	235	18	17.5	1.85	Y2-112M-4	4
			28.5	15.8	2.33		
			34	15	2.66		
30	EILM65-5026-A4-0040	245	19	19	2.19	Y2-112M-4	4
			30	17	2.65		
			35	16	2.91		
31	EILM65-5026-A4-0055	255	19	21	2.36	Y2-132S-4	5.5
			31	18.5	2.98		
			37	17	3.37		
32	EILM65-5026-A4-0055	264	20	22.5	2.62	Y2-132S-4	5.5
			32	20	3.31		
			38	18.5	3.63		
33	EILM65-5032-A4-0055	270	20	23	3.07	Y2-132S-4	5.5
			33	21	4.06		
			39	20	4.25		
34	EILM65-5032-A4-0075	285	21	26	3.39	Y2-132M-4	7.5
			34.7	24	4.54		
			41.6	22	5.01		
35	EILM65-5032-A4-0075	300	22	29	3.95	Y2-132M-4	7.5
			36.5	26.6	5.31		
			44	24	6.03		
36	EILM65-5032-A4-0110	315	23	32	4.57	Y160M-4	11
			38	29.5	6.14		
			46	27	6.75		
37	EILM65-5032-A4-0110	329	24	35	5.21	Y160M-4	11
			40	32	6.99		
			48	29.5	7.69		
38	EILM80-6513-A4-0015	139	30	5.1	0.74	Y2-90L-4	1.5
			50	3.5	0.86		
			60	1.4	0.91		
39	EILM80-6516-A4-0022	174	30	9	1.24	Y2-100L1-4	2.2
			50	6.9	1.52		
			60	5.5	1.65		
40	EILM80-6520-A4-0030	195	32	11.5	1.76	Y2-100L2-4	3
			50	10	2.08		
			60	8.5	2.18		
41	EILM80-6520-A4-0040	205	33	13	1.93	Y2-112M-4	4
			52.7	11	2.42		
			63	9.45	2.53		
42	EILM80-6520-A4-0040	214	35	14	2.19	Y2-112M-4	4
			55	12	2.75		
			66	10.3	2.88		
43	EILM80-6526-A4-0055	225	31	16	2.67	Y2-132S-4	5.5
			51	15.3	3.32		
			61	13.5	3.66		
44	EILM80-6526-A4-0055	235	32	18	2.82	Y2-132S-4	5.5
			53	16.7	3.78		
			64	14.7	4.18		

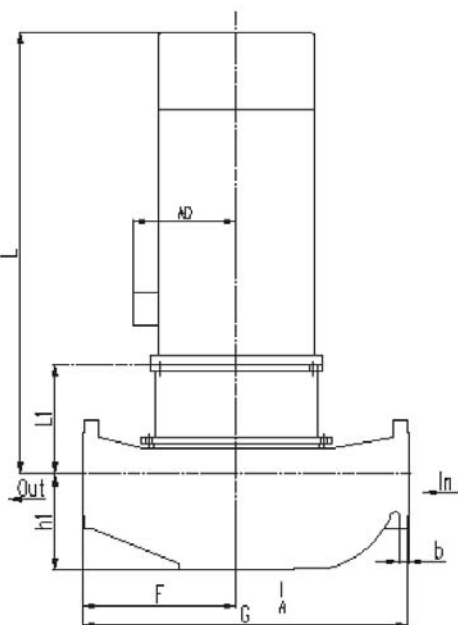
**Performance Data - 50Hz, 1450RPM**

No.	Model	Impeller dia.(mm)	Flow (m³/h)	Head (m)	Power (kw)	Motor type	Power (kw)	No.	Model	Impeller dia.(mm)	Flow (m³/h)	Head (m)	Power (kw)	Motor type	Power (kw)
45	EILM80-6526-A4-0055	245	33	19.5	3.19	Y2-132S-4	5.5	67	EILM100-8032-A4-0150	329	60	31.5	9.45	Y2-160L-4	15
			55.7	18	4.28						100	26	11.76		
			67	16	4.83						120	21.5	12.66		
46	EILM80-6526-A4-0075	255	34.7	21	3.61	Y2-132M-4	7.5	68	EILM100-8040-A4-0220	350	51.34	39.54	11.25	Y2-180L-4	22
			58	19.6	4.83						85.57	35.15	15.08		
			70	17	5.33						102.69	29.29	16.66		
47	EILM80-6526-A4-0075	264	36	22.5	4	Y2-132M-4	7.5	69	EILM100-8040-A4-0220	365	53.55	43.01	12.76	Y2-180L-4	22
			60	21	5.36						89.24	38.23	17.10		
			72	18.5	5.92						107.09	31.86	18.89		
48	EILM80-6532-A4-0075	270	30	25	4.37	Y2-132M-4	7.5	70	EILM100-8040-A4-0300	380	55.75	46.61	14.40	Y2-200L-4	30
			51	22.6	5.32						92.91	41.43	19.30		
			61	21	5.95						111.49	34.53	21.32		
49	EILM80-6532-A4-0110	285	32	27.7	5.04	Y2-160M-4	11	71	EILM100-8040-A4-0300	395	57.95	50.37	16.18	Y2-200L-4	30
			54	25	6.46						96.58	44.77	21.67		
			65	23	7.36						115.89	37.31	23.94		
50	EILM80-6532-A4-0110	300	34	30.5	6	Y2-160M-4	11	72	EILM100-8040-A4-0300	409	60	54	17.96	Y2-200L-4	30
			56.5	28	7.3						100	48	24.06		
			68	25.8	8.1						120	40	26.58		
51	EILM80-6532-A4-0110	315	37	33.4	6.73	Y2-160M-4	11	73	EILM125-10016-A4-0040	180	75.6	7.6	2.39	Y2-112M-4	4
			62	30.9	8.54						108	5.9	2.58		
			74.5	28	9.47						135	3.9	2.75		
52	EILM80-6532-A4-0150	329	40	37	7.46	Y2-160L-4	15	74	EILM125-10020-A4-0040	175	73.60	9.16	2.47	Y2-112M-4	4
			65	34	9.56						116.12	7.02	2.98		
			78	31	10.62						139.02	5.42	3.22		
53	EILM100-8016-A4-0030	174	50	8	1.89	Y2-100L2-4	3	75	EILM125-10020-A4-0055	185	77.80	10.24	2.91	Y2-132S-4	5.5
			81	6.3	2.32						122.76	7.85	3.52		
			97.5	3.6	2.5						146.96	6.05	3.81		
54	EILM100-8020-A4-0040	185	50	10	2.37	Y2-112M-4	4	76	EILM125-10020-A4-0055	195	82.01	11.38	3.41	Y2-132S-4	5.5
			82	8.7	2.95						129.39	8.72	4.12		
			97	7.6	3.22						154.91	6.73	4.46		
55	EILM100-8020-A4-0055	195	53	11	2.78	Y2-132S-4	5.5	77	EILM125-10020-A4-0075	205	86.21	12.57	3.96	Y2-132M-4	7.5
			86	9.7	3.45						136.03	9.64	4.79		
			102	8.5	3.75						162.85	7.43	5.18		
56	EILM100-8020-A4-0055	205	55	12.6	3.23	Y2-132S-4	5.5	78	EILM125-10020-A4-0075	214	90	13.7	4.51	Y2-132M-4	7.5
			91	10.6	4.01						142	10.5	5.45		
			107	9.4	4.35						170	8.1	5.89		
57	EILM100-8020-A4-0075	214	58	13.7	3.67	Y2-132M-4	7.5	79	EILM125-10026-A4-0110	225	80.97	16.92	6.26	Y2-160M-4	11
			95	11.6	4.56						126.14	15.47	7.68		
			112	10.2	4.95						149.15	14.16	8.23		
58	EILM100-8026-A4-0075	225	49	16.3	3.66	Y2-132M-4	7.5	80	EILM125-10026-A4-0110	235	84.56	18.46	7.14	Y2-160M-4	11
			81	13.83	4.66						131.74	16.88	8.75		
			98	11.8	5.05						155.78	15.45	9.38		
59	EILM100-8026-A4-0075	235	51.63	17.75	4.17	Y2-132M-4	7.5	81	EILM125-10026-A4-0150	245	88.16	20.07	8.09	Y2-160L-4	15
			84.56	15.01	5.30						137.35	18.34	9.91		
			102.37	12.84	5.76						162.41	16.79	10.63		
60	EILM100-8026-A4-0075	245	53.83	19.29	4.72	Y2-132M-4	7.5	82	EILM125-10026-A4-0150	255	91.76	21.74	9.12	Y2-160L-4	15
			88.16	16.36	6.01						142.95	19.87	11.17		
			106.72	13.95	6.52						169.03	18.19	11.99		
61	EILM100-8026-A4-0110	255	56.02	20.90	5.33	Y2-160M-4	11	83	EILM125-10026-A4-0150	264	95	23.3	10.12	Y2-160L-4	15
			91.76	17.73	6.78						148	21.3	12.4		
			111.08	15.11	7.35						175	19.5	13.3		
62	EILM100-8026-A4-0110	264	58.00	22.40	5.88	Y2-160M-4	11	84	EILM125-10032-A4-0150	270	66.47	24.25	7.47	Y2-160L-4	15
			95.00	19.00	7.52						110.79	21.55	10.09		
			115.00	16.20	8.16						132.95	18.86	11.30		
63	EILM100-8032-A4-0110	270	49.24	21.22	5.22	Y2-160M-4	11	85	EILM125-10032-A4-0150	285	70.17	27.01	8.78	Y2-160L-4	15
			82.07	17.51	6.50						116.95	24.01	11.86		
			98.48	14.48	7.00						140.33	21.01	13.29		
64	EILM100-8032-A4-0110	285	51.98	23.64	6.14	Y2-160M-4	11	86	EILM125-10032-A4-0185	300	73.86	29.93	10.24	Y2-180M-4	18.5
			86.63	19.51	7.64						123.10	26.61	13.84		
			103.95	16.13	8.23						147.72	23.28	15.50		
65	EILM100-8032-A4-0110	300	54.71	26.19	7.16	Y2-160M-4	11	87	EILM125-10032-A4-0220	315	77.55	33.00	11.86	Y2-180L-4	22
			91.19	21.62	8.92						129.26	29.33	16.02		
			109.42	17.88	9.60						155.11	25.67	17.95		
66	EILM100-8032-A4-0150	315	57.45	28.88	8.29	Y2-160L-4	15	88	EILM125-10032-A4-0300	329	81	36	13.51	Y2-200L-4	30
			95.74	23.83	10.32						135	32	18.25		
			114.89	19.71	11.11						162	28	20.45		

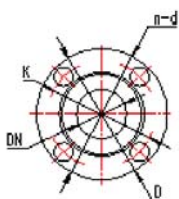
**Performance Data - 50Hz, 1450RPM**

No.	Model	Impeller dia.(mm)	Flow (m³h)	Head (m)	Power (kw)	Motor type	Power (kw)	No.	Model	Impeller dia.(mm)	Flow (m³h)	Head (m)	Power (kw)	Motor type	Power (kw)
89	EILM125-10040-A4-0300	350	77.02	38.81	15.07	Y2-200L-4	30	111	EILM150-12540-A4-0550	409	144	43	26.51	Y2-250M-4	55
			128.36	34.42	19.58						245	37	37.26		
			154.03	30.76	21.82						300	28.5	41.57		
90	EILM125-10040-A4-0300	365	80.32	42.21	17.09	Y2-200L-4	30	112	EILM200-15020-A4-0185	220	216	12	13.23	Y2-180M-4	18.5
			133.86	37.43	22.20						360	10	14.25		
			160.64	33.45	24.75						424.8	9	16.01		
91	EILM125-10040-A4-0370	380	83.62	45.75	19.29	Y2-225S-4	37	113	EILM200-15026-A4-0185	225	165.34	16.71	10.61	Y2-200L-4	18.5
			139.36	40.57	25.05						276.14	15.25	14.16		
			167.24	36.26	27.93						352.84	12.20	15.84		
92	EILM125-10040-A4-0370	395	86.92	49.43	21.66	Y2-225S-4	37	114	EILM200-15026-A4-0220	235	172.69	18.22	12.09	Y2-200L-4	22
			144.87	43.84	28.14						288.41	16.64	16.13		
			173.84	39.17	31.37						368.52	13.31	18.05		
93	EILM125-10040-A4-0450	409	90	53	24.05	Y2-225M-4	45	115	EILM200-15026-A4-0300	245	180.04	19.81	13.70	Y2-200L-4	30
			150	47	31.24						300.68	18.09	18.28		
			180	42	34.82						384.20	14.47	20.45		
94	EILM150-12520-A4-0110	195	104.79	11.21	5.42	Y2-160M-4	11	116	EILM200-15026-A4-0300	255	186.6	21.46	15.45	Y2-200L-4	30
			173.13	9.63	6.48						311.7	19.59	20.61		
			209.58	8.30	7.12						398.3	15.67	23.06		
95	EILM150-12520-A4-0110	205	110.16	12.39	6.29	Y2-160M-4	11	117	EILM200-15026-A4-0300	264	194	23	17.14	Y2-200L-4	30
			182.01	10.64	7.52						324	21	22.87		
			220.33	9.18	8.27						414	16.8	25.59		
96	EILM150-12520-A4-0110	214	115	13.5	7.16	Y2-160M-4	11	118	EILM200-15032-A4-0300	270	188.75	23.57	16.86	Y2-200L-4	30
			190	11.6	8.56						303.65	20.88	22.67		
			230	10	9.41						365.20	18.86	26.16		
97	EILM150-12526-A4-0150	225	122.73	16.34	8.74	Y2-160L-4	15	119	EILM165-5032-A4-0370	285	199.24	26.26	19.83	Y2-225S-4	37
			204.55	15.25	11.47						320.52	23.26	26.67		
			245.45	13.66	13.08						385.49	21.01	30.77		
98	EILM150-12526-A4-0185	235	128.18	17.83	9.96	Y2-180M-4	18.5	120	EILM200-15032-A4-0370	300	209.73	29.10	23.13	Y2-225S-4	37
			213.64	16.64	13.07						337.39	25.78	31.10		
			256.36	14.90	14.90						405.78	23.28	35.88		
99	EILM150-12526-A4-0185	245	133.64	19.38	11.29	Y2-180M-4	18.5	121	EILM200-15032-A4-0450	315	220.21	32.08	26.78	Y2-225M-4	45
			222.73	18.09	14.81						354.26	28.42	36.00		
			267.27	16.19	16.89						426.06	25.67	41.54		
100	EILM150-12526-A4-0220	255	139.09	20.99	12.72	Y2-180L-4	22	122	EILM200-15032-A4-0550	329	230	35	30.51	Y2-250M-4	55
			231.82	19.59	16.70						370	31	41.02		
			278.18	17.54	19.04						445	28	47.33		
101	EILM150-12526-A4-0300	264	144	22.5	14.12	Y2-200L-4	30	102	EILM150-12532-A4-0150	270	98.48	22.90	8.33	Y2-160L-4	15
			240	21	18.53						164.13	21.55	11.09		
			288	18.8	21.13						196.96	19.53	12.35		
103	EILM150-12532-A4-0185	285	103.95	25.51	9.80	Y2-180M-4	18.5	103	EILM150-12532-A4-0185	285	173.25	24.01	13.00	Y2-180M-4	18.5
			173.25	24.01	13.00						207.90	21.76	14.53		
			207.90	21.76	14.53						109.42	28.27	11.43		
104	EILM150-12532-A4-0220	300	182.37	26.61	15.21	Y2-180L-4	22	104	EILM150-12532-A4-0220	300	182.37	26.61	15.21	Y2-180L-4	22
			218.84	24.11	16.95						218.84	24.11	16.95		
			218.84	24.11	16.95						114.89	31.17	13.24		
105	EILM150-12532-A4-0300	315	114.89	31.17	13.24	Y2-200L-4	30	105	EILM150-12532-A4-0300	315	191.49	29.33	17.61	Y2-200L-4	30
			191.49	29.33	17.61						229.79	26.58	19.62		
			229.79	26.58	19.62						120	34	15.08		
106	EILM150-12532-A4-0300	329	120	34	15.08	Y2-200L-4	30	106	EILM150-12532-A4-0300	329	200	32	20.06	Y2-200L-4	30
			200	32	20.06						240	29	22.35		
			240	29	22.35						123.23	31.49	16.61		
107	EILM150-12540-A4-0300	350	123.23	31.49	16.61	Y2-200L-4	30	107	EILM150-12540-A4-0300	350	209.66	27.10	23.35	Y2-200L-4	30
			209.66	27.10	23.35						256.72	20.87	26.05		
			256.72	20.87	26.05						128.51	34.25	18.84		
108	EILM150-12540-A4-0370	365	128.51	34.25	18.84	Y2-225S-4	37	108	EILM150-12540-A4-0370	365	218.64	29.47	26.48	Y2-225S-4	37
			218.64	29.47	26.48						267.73	22.70	29.55		
			267.73	22.70	29.55						133.79	37.12	21.26		
109	EILM150-12540-A4-0450	380	133.79	37.12	21.26	Y2-225M-4	45	109	EILM150-12540-A4-0450	380	227.63	31.94	29.88	Y2-225M-4	45
			227.63	31.94	29.88						278.73	24.60	33.34		
			278.73	24.60	33.34						139.07	40.11	23.88		
110	EILM150-12540-A4-0550	395	139.07	40.11	23.88	Y2-250M-4	55	110	EILM150-12540-A4-0550	395	236.61	34.51	33.56	Y2-250M-4	55
			236.61	34.51	33.56						289.73	26.58	37.45		
			289.73	26.58	37.45										

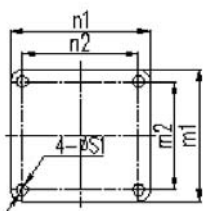
**Installation Dimension - 50Hz, 2 Pole**



**Inlet Flange**

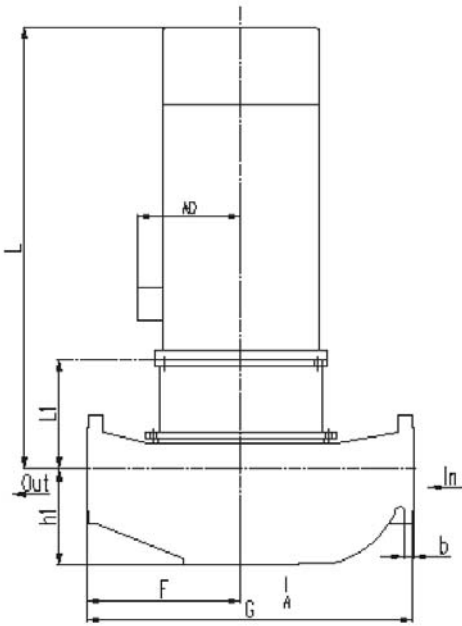


**A Direction**

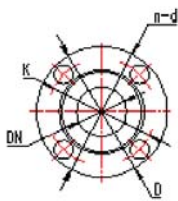


Item	Model	h1	L1	DN	F	G	L	AD	n2xm2	n1xm1	s1	D	K	n-d	b											
1	EILM40-3213-A2-0007	113	152	40	150	310	407	145				150	110		18											
2	EILM40-3213-A2-0011						422																			
3	EILM40-3213-A2-0015						447																			
4	EILM40-3213-A2-0022						489									180										
5	EILM50-3216-A2-0022						504									190										
6	EILM50-3216-A2-0030	164	160	320	489	180																				
7	EILM50-3216-A2-0040				504	190																				
8	EILM50-3216-A2-0055				577																					
9	EILM50-3220-A2-0055	118	186	50	210	420	576	210			165	125														
10	EILM50-3220-A2-0075						723																			
11	EILM50-3220-A2-0110						218																			
12	EILM50-3226-A2-0150						228								230	470	733	255								
13	EILM50-3226-A2-0185				788																					
14	EILM65-4013-A2-0015	128	152		175	360	422	155																		
15	EILM65-4013-A2-0022						447																			
16	EILM65-4013-A2-0030						489									180										
17	EILM65-4013-A2-0040						504									190										
18	EILM65-4016-A2-0030						164											195	370	489	180					4-φ18
19	EILM65-4016-A2-0040	504	190																							
20	EILM65-4016-A2-0055	187						577	210																	
21	EILM65-4016-A2-0075							723																		
22	EILM65-4020-A2-0055						210																			
23	EILM65-4020-A2-0075	138	186		240	480	576																			
24	EILM65-4020-A2-0110						723																			
25	EILM65-4026-A2-0150						218									260	520	733	255							
26	EILM65-4026-A2-0185						228									260	520	788	280							
27	EILM65-4026-A2-0220				818	280																				
28	EILM65-5013-A2-0055	155	187		200	410	577	210	170x200	200x230		185	145													
29	EILM65-5013-A2-0075						725																			
30	EILM65-5016-A2-0075						220									220	440	725	255							
31	EILM65-5016-A2-0110						220									220	440	725	255							
32	EILM65-5020-A2-0110	138	221		240	480	726	255																		
33	EILM65-5020-A2-0150						781																			
34	EILM65-5020-A2-0185						819									280										
35	EILM65-5026-A2-0220						229									260	520	819	280							
36	EILM65-5026-A2-0300	232	260	520	892																					
37	EILM80-6513-A2-0055	160	187		220	480	577	210																		
38	EILM80-6513-A2-0075						725																			
39	EILM80-6513-A2-0110						780									255										
40	EILM80-6516-A2-0110						810									280										
41	EILM80-6516-A2-0150	158	220		260	540	839	305																		
42	EILM80-6516-A2-0185						897									305										
43	EILM80-6520-A2-0150						942																			
44	EILM80-6520-A2-0185	150	218		290	590	778	280																		
45	EILM80-6520-A2-0220						808									280										
46	EILM80-6520-A2-0300						881									305										
47	EILM80-6526-A2-0370						221									290	590	997	280							
48	EILM100-8016-A2-0150	188	222	100	260	540	725	255				220	180		24											
49	EILM100-8016-A2-0185						780																			
50	EILM100-8016-A2-0220						810									280										
51	EILM100-8016-A2-0300						839																			
52	EILM100-8020-A2-0300						897									305										
53	EILM100-8020-A2-0370	942																								
54	EILM100-8020-A2-0450																									
55	EILM125-10016-A2-0220	234	220	125	330	690	280	305	260x260	300x300		250	210		26											
56	EILM125-10016-A2-0300	897																								
57	EILM125-10020-A2-0300	942					335																			
58	EILM125-10020-A2-0370																									
59	EILM125-10020-A2-0450																									

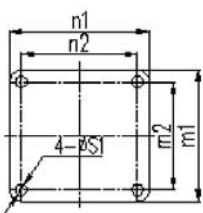
**Installation Dimension - 50Hz, 4 Pole**



**Inlet Flange**

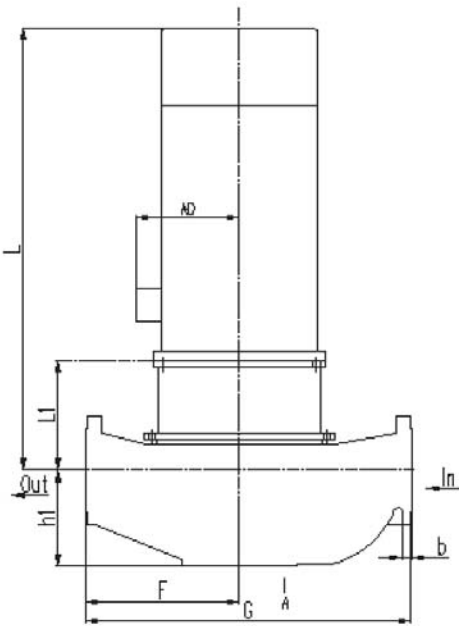


**A Direction**

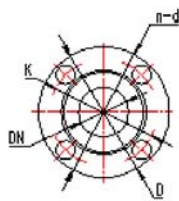


Item	Model	h1	L1	DN	F	G	L	AD	n2x2	n1xm1	s1	D	K	n-d	b
1	EILM40-3213-A4-0005	113	152	40	150	310	407	145			12	150	110		18
2	EILM50-3216-A4-0005		151		160	320									
3	EILM50-3220-A4-0011		173	50	210	420	421	155			14	165	125		
4	EILM50-3226-A4-0022				230	470	498	180							
5	EILM50-3226-A4-0030														
6	EILM65-4013-A4-0075	128	152		175	360	407	145			12				
7	EILM65-4016-A4-0011		151		195	370	422								
8	EILM65-4020-A4-0011		173		240	480	421	155			14				
9	EILM65-4020-A4-0015		179				446								
10	EILM65-4026-A4-0022		201		260	520	498	180							
11	EILM65-4026-A4-0030		201		290	580	519	190							
12	EILM65-4032-A4-0040		155		200	410	422	155			12			4-φ18	20
13	EILM65-4032-A4-0055		152		220	440	477					185	145		
14	EILM65-5013-A4-0011		166	65	240	480	491	180	170x200	200x230	14				
15	EILM65-5016-A4-0015		174				497								
16	EILM65-5020-A4-0022		197		260	520	512	190							
17	EILM65-5020-A4-0030		179				587	210							
18	EILM65-5026-A4-0022		201		290	580	519	190							
19	EILM65-5026-A4-0030		231				591	210							
20	EILM65-5026-A4-0040		160		200	410	422	155			12				
21	EILM65-5026-A4-0055		152		220	440	477								
22	EILM65-5032-A4-0040		166		240	480	491	180							
23	EILM65-5032-A4-0055		174				497								
24	EILM65-5032-A4-0110		197		260	520	512	190							
25	EILM65-5032-A4-0110		179				587	210							
26	EILM80-6513-A4-0011		201		290	580	519	190							
27	EILM80-6513-A4-0015		231				591	210							
28	EILM80-6516-A4-0022		160		200	410	422	155			12				
29	EILM80-6516-A4-0030		158		220	440	477								
30	EILM80-6520-A4-0040		164		240	480	489	180							
31	EILM80-6520-A4-0055		150		260	540	488	190							
32	EILM80-6526-A4-0075		168		290	590	503	190				200	160		25
33	EILM80-6532-A4-0075		201				592								
34	EILM80-6532-A4-0110		175		310	640	632	210							22
35	EILM80-6532-A4-0150		235				631		200x250	250x300	18				
36	EILM100-8016-A4-0022		164		260	540	489	180			12				
37	EILM100-8016-A4-0030		179				519	190							
38	EILM100-8020-A4-0040		202		290	600	592	210	170x200	200x230	14				
39	EILM100-8020-A4-0055		234				632								
40	EILM100-8026-A4-0075		188		310	630	739					220	180	8-φ18	24
41	EILM100-8026-A4-0110		249				740	255							
42	EILM100-8026-A4-0110		235		340	700	795		200x250	250x300	18				
43	EILM100-8032-A4-0110		249				879	280							
44	EILM100-8032-A4-0150		179		400	800	909	305	310x310	370x370					
45	EILM100-8040-A4-0220		202				909								
46	EILM100-8040-A4-0300		238				909								
47	EILM125-10016-A4-0040		220		330	680	592	210	260x260	300x300	14				
48	EILM125-10020-A4-0040		202				519	190							
49	EILM125-10020-A4-0055		238		340	700	743								
50	EILM125-10020-A4-0075		240				798	255							
51	EILM125-10026-A4-0110		235				795		200x250	250x300	18				
52	EILM125-10026-A4-0150		249		360	740	825	280							
53	EILM125-10032-A4-0185		249				865								
54	EILM125-10032-A4-0220		284				909	305							
55	EILM125-10040-A4-0300		234		380	810	964	335							
56	EILM125-10040-A4-0370		234				989								
57	EILM125-10040-A4-0450		238				740	739							
58	EILM125-10040-A4-0450		238				798	255							
59	EILM150-12520-A4-0110		241		360	760	822	280	200x250	250x300				8-φ22	
60	EILM150-12526-A4-0150		249				892	305						8-φ22	
61	EILM150-12526-A4-0185		284				809	255						8-φ22	
62	EILM150-12526-A4-0220		261				839							8-φ22	
63	EILM150-12526-A4-0300		249		895	879	879	280	340x340	420x420				8-φ22	
64	EILM150-12532-A4-0150		284				909	305						8-φ22	
65	EILM150-12532-A4-0185		284				964	335						8-φ22	
66	EILM150-12532-A4-0220		261		850	989	989	370	250x300	300x350				8-φ22	
67	EILM150-12532-A4-0300		261				1054							8-φ22	
68	EILM150-12540-A4-0370		261				840	851	280	340x340	420x420			12-φ22	28
69	EILM150-12540-A4-0450		248		380	830	1018	305	250x300	300x350				12-φ22	
70	EILM150-12540-A4-0550		250				910							12-φ22	
71	EILM200-15020-A4-0185		285		430	920	965	335	340x340	420x420				12-φ22	30
72	EILM200-15026-A4-0300		285				990							12-φ22	
73	EILM200-15032-A4-0300		285				1055	370						12-φ22	
74	EILM200-15032-A4-0370		285											12-φ22	
75	EILM200-15032-A4-0450		285											12-φ22	
76	EILM200-15032-A4-0550		285											12-φ22	

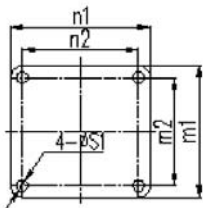
**Installation Dimension - 60Hz, 2 Pole**



**Inlet Flange**

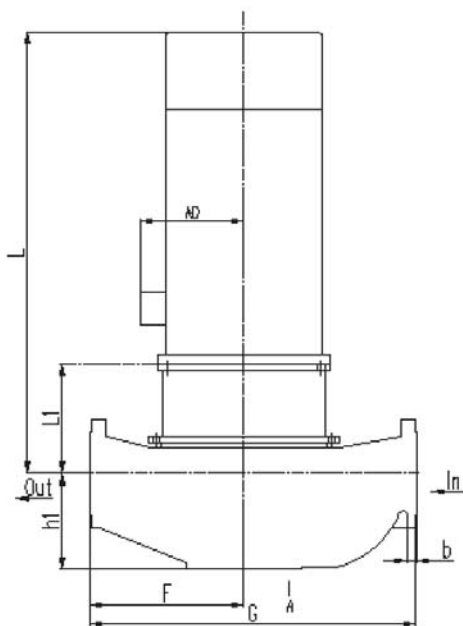


**A Direction**

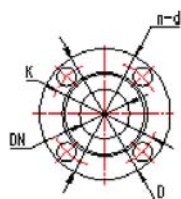


Item	Model	h1	L1	DN	F	G	L	AD	n2xm2	n1xm1	s1	D	K	n-d	b			
1	EILM40-3213-B2-0015	113	152	40	150	310	447	155	170x200	200x230	12	150	110		18			
2	EILM40-3213-B2-0022																	
3	EILM40-3213-B2-0030																	
4	EILM40-3213-B2-0040		164															
5	EILM50-3216-B2-0040	118	164	50	210	420	504	190	170x200	200x230	14	165	125					
6	EILM50-3216-B2-0055		187															
7	EILM50-3216-B2-0075		186															
8	EILM50-3220-B2-0075		218															
9	EILM50-3220-B2-0110	128	218	230	470	723	255	170x200	200x230	14	185	145						
10	EILM50-3220-B2-0150		228															
11	EILM50-3226-B2-0150		231															
12	EILM50-3226-B2-0185		231															
13	EILM50-3226-B2-0220	138	231	65	520	891	305	170x200	200x230	12	185	145						
14	EILM50-3226-B2-0300		164															
15	EILM65-4013-B2-0030		187															
16	EILM65-4013-B2-0040		187															
17	EILM65-4013-B2-0055	155	187	200	410	577	210	170x200	200x230	12	185	145						
18	EILM65-4013-B2-0075		220															
19	EILM65-4016-B2-0055		218															
20	EILM65-4016-B2-0075		231															
21	EILM65-4016-B2-0110	138	218	240	480	778	255	170x200	200x230	14	185	145						
22	EILM65-4020-B2-0110		220															
23	EILM65-4020-B2-0150		218															
24	EILM65-4020-B2-0185		231															
25	EILM65-4026-B2-0300	155	231	65	520	891	305	170x200	200x230	12	185	145						
26	EILM65-4026-B2-0370		187															
27	EILM65-5013-B2-0055		220															
28	EILM65-5013-B2-0075		220															
29	EILM65-5013-B2-0110	138	220	220	440	725	255	170x200	200x230	12	185	145						
30	EILM65-5016-B2-0110		221															
31	EILM65-5016-B2-0150		224															
32	EILM65-5016-B2-0185		232															
33	EILM65-5016-B2-0220	160	221	240	480	884	305	170x200	200x230	14	185	145						
34	EILM65-5020-B2-0220		224															
35	EILM65-5020-B2-0300		232															
36	EILM65-5020-B2-0370		232															
37	EILM65-5026-B2-0370	158	232	260	520	892	305	170x200	200x230	12	200	160						
38	EILM80-6513-B2-0110		220															
39	EILM80-6513-B2-0150		220															
40	EILM80-6513-B2-0185		220															
41	EILM80-6516-B2-0150	150	220	80	480	810	280	170x200	200x230	14	200	160						
42	EILM80-6516-B2-0185		218															
43	EILM80-6516-B2-0220		221															
44	EILM80-6516-B2-0300		221															
45	EILM80-6520-B2-0220	188	218	260	540	808	280	170x200	200x230	12	220	180						
46	EILM80-6520-B2-0300		222															
47	EILM80-6520-B2-0370		222															
48	EILM100-8016-B2-0220		222															
49	EILM100-8016-B2-0300	220	222	100	290	600	942	335	170x200	200x230	14	250	210					
50	EILM100-8016-B2-0370		237															
51	EILM100-8020-B2-0450		237															
52	EILM125-10016-B2-0450		220													125	330	690

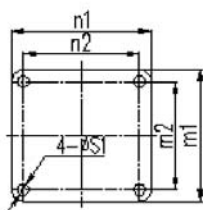
**Installation Dimension - 60Hz, 4 Pole**



**Inlet Flange**



**A Direction**



Item	Model	h1	L1	DN	F	G	L	AD	n2xm2	n1xm1	s1	D	K	n-d	b
1	EILM40-3213-B4-0005	113		40	150	310	407					150	110		18
2	EILM50-3216-B4-0005		152				397	145							
3	EILM50-3216-B4-0007				160	320					12				
4	EILM50-3216-B4-0011						422								
5	EILM50-3220-B4-0011		118	50			396	155				165	125		
6	EILM50-3220-B4-0015		151		210	420	421				14				
7	EILM50-3220-B4-0022		163				488	180							
8	EILM50-3226-B4-0030		173		230	470	498								
9	EILM50-3226-B4-0040						513	190							
10	EILM65-4013-B4-0011	128			175	360	407	145							
11	EILM65-4016-B4-0011		152		195	370	422	155			12				
12	EILM65-4016-B4-0015						447								
13	EILM65-4020-B4-0022		138		240	480	488	180							
14	EILM65-4020-B4-0030		173				513	190			14				
15	EILM65-4026-B4-0040		196		260	520	586								
16	EILM65-4026-B4-0055		201				591	210							
17	EILM65-4032-B4-0075		231		290	580	736	255							
18	EILM65-4032-B4-0110						424								
19	EILM65-5013-B4-0011		155	65	200	410	449	155	170x200	200x230	12	185	145	4-φ18	20
20	EILM65-5013-B4-0015						489	180							
21	EILM65-5013-B4-0022		164		220	440					14				
22	EILM65-5016-B4-0022		160				500	190							
23	EILM65-5016-B4-0030		138		240	480	506	190							
24	EILM65-5020-B4-0040		189				579								
25	EILM65-5020-B4-0055		197		260	520	587	210							
26	EILM65-5020-B4-0075						627								
27	EILM65-5026-B4-0055						736	255							
28	EILM65-5026-B4-0075				290	580	795	280							
29	EILM65-5032-B4-0110		155	231			825								
30	EILM65-5032-B4-0150														
31	EILM65-5032-B4-0185														
32	EILM80-6513-B4-0022	160			220	480	504	190							
33	EILM80-6516-B4-0030		164				486				12				
34	EILM80-6516-B4-0040	158			260	540	576	210							
35	EILM80-6520-B4-0040		186				616				14	200	160		25
36	EILM80-6520-B4-0055	150					632								
37	EILM80-6520-B4-0075		202		290	590	739	255							
38	EILM80-6526-B4-0075		234				794								
39	EILM80-6526-B4-0110	168					795								
40	EILM80-6526-B4-0150				310	640	825	280	200x250	250x300	18				22
41	EILM80-6532-B4-0150		175	235			865								
42	EILM80-6532-B4-0185														
43	EILM80-6532-B4-0220														
44	EILM100-8016-B4-0030		164		260	540	504	180							
45	EILM100-8016-B4-0040		187				577	210			12				
46	EILM100-8016-B4-0055		202				632								
47	EILM100-8020-B4-0075		234		290	600	729	255	170x200	200x230	14				
48	EILM100-8020-B4-0110	188					739								
49	EILM100-8026-B4-0110				310	630	794					220	180	8-φ18	24
50	EILM100-8026-B4-0150						824	280							
51	EILM100-8026-B4-0185						795	255							
52	EILM100-8032-B4-0150		235				825	280							
53	EILM100-8032-B4-0185		249		340	700	865	305	200x250	250x300	18				
54	EILM100-8032-B4-0220	186					909	335							
55	EILM100-8032-B4-0300						989	370							
56	EILM100-8040-B4-0450		284		400	800	1054	410	310x310	370x370					
57	EILM100-8040-B4-0550														
58	EILM125-10016-B4-0055		202		330	690	632	210	260x260	300x300	14				
59	EILM125-10020-B4-0110		234				739								
60	EILM125-10020-B4-0150						794	255							
61	EILM125-10026-B4-0150		125				798					250	210		26
62	EILM125-10026-B4-0185		238		340	700	828	280	200x250	250x300	18				
63	EILM125-10026-B4-0220						868								
64	EILM125-10026-B4-0300		241				901	305							
65	EILM125-10032-B4-0220		235		360	740	865	280							
66	EILM125-10040-B4-0450						989	335							
67	EILM125-10040-B4-0550		240	125	380	810	1054	370				250	210	8-φ18	
68	EILM125-10040-B4-0750						1129	410							
69	EILM150-12520-B4-0150						794	255	200x250	250x300					
70	EILM150-12520-B4-0185		234				824	280							
71	EILM150-12520-B4-0220						864								
72	EILM150-12526-B4-0300		260		360	740	901	305							
73	EILM150-12532-B4-0300		249	150			909				18	285	240	8-φ22	
74	EILM150-12532-B4-0370						964	335	340x340	420x420					
75	EILM150-12532-B4-0450		284				989								
76	EILM150-12540-B4-0750						1129	410							
77	EILM150-12540-B4-0900		250		400	850	1179	410	250x300	300x350					
78	EILM200-15020-B4-0370	280	237				840	335							
79	EILM200-15032-B4-0550						1055	370							
80	EILM200-15032-B4-0750		300	200	430	920	1130	410	340x340	420x420		340	295	12-φ22	28
81	EILM200-15032-B4-0900						1180								30



**Euroflo Pumps International Pte Ltd**

No.1 Joo Koon Way Singapore 628942 Tel: +65 6861 3836 Fax: +65 6861 3936

30101/1903Rev02